

WASHINGTON STATE GRANGE PROGRAM HANDBOOK - 2024



WASHINGTON STATE GRANGE

924 Capitol Way S., #300

PO Box 1186

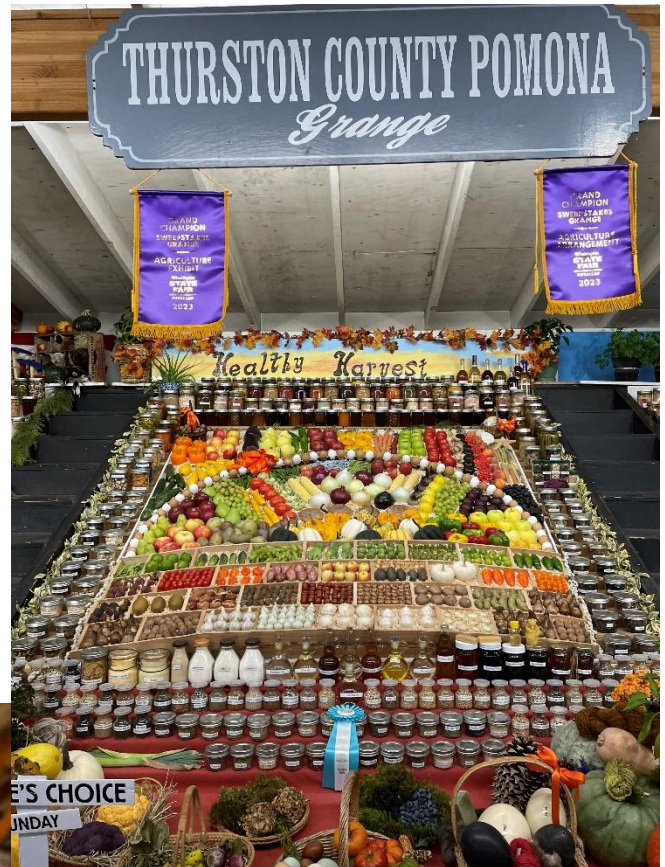
Olympia WA 98541

360-943-9911 – 800-854-1635

Fax 360-357-3548

Email: grange@wa-grange.org

www.wa-grange.com



**“Uniting Communities by
Strengthening Families,
Enriching Lives, and
Developing Leaders for a
Better Tomorrow”**

You're invited to participate in Grange Programs!

This handbook is a convenient reference for the programs and projects of all departments in the Grange.

I urge Grange members of all ages to take part in the interesting projects and contests available.

This handbook contains the information and rules pertaining to state and national contests for the year 2024. You may need to contact your Pomona Grange officers for the dates and locations of the Pomona Grange level contests.



Fraternally,

A handwritten signature in cursive script that reads "Thomas A. Gwin".

Tom Gwin, President
Washington State Grange

WASHINGTON STATE GRANGE OFFICERS 2023-2024

Master/President: Tom Gwin
Overseer/Vice President: David Bryant
Lecturer: Leslie Jo Wells
Steward: Jacob Gwin
Assistant Steward: Jonny Pittman
Lady Asst Steward: Alexis Kudsk
Chaplain: Carolyn Hojem
Treasurer: Annie Scott
Secretary: Karen Jackson
Gatekeeper: Butch Ogden
Ceres: Debbie Fisch
Pomona: Jordanne Webb
Flora: Shavanna May
Executive Committee: Brittney Oliver
Executive Committee: Duane Hamp
Executive Committee: Rick Ferguson
Family Living Director: Helen Berg

TABLE OF CONTENTS

MISCELLANEOUS Page 3

Grange Hall Improvement Contest
Reasons to Belong to the Grange
Grange Camper Association
WA State Grange Foundation
WA State Grange Scholarships
Grange Insurance Scholarships
Cooperative Activities

LECTURER Page 6

Leslie Jo Wells, State Lecturer
18232 201st Avenue SE
Monroe, WA 98272
360-306-0905 (cell)
Lesliewells@att.net

COMMUNITY SERVICE Page 13

Heather Ferguson, State Director
PO Box 336
Athena, OR 97813
503-307-7951
haann@hotmail.com

MEMBERSHIP Page 16

Contact the Washington State
Grange Office

JUNIOR GRANGE Page 18

Heather Ferguson, Director
PO Box 336
Athena, OR 97813
503-307-7951
haann@hotmail.com

YOUTH/YOUNG ADULTS Page 25

Jerry Gwin, Director
PO Box 14
Humptulips, WA 98552
360-987-2546
Davona1242@outlook.com

FAMILY LIVING Page 30

Helen Berg, Director
1482 Road 20 NW
Soap Lake, WA 98851
chuckhelenberg@hotmail.com

YOUTH FAIRS Page 35

Contact the Washington State
Grange Office

GRANGE HALL IMPROVEMENT CONTEST

Each Subordinate Grange is responsible for improving and beautifying its hall and grounds and is encouraged to give serious thought and action to these projects.



Plan to enter the Hall Improvement Contest. Present your material in an attractive and well-organized notebook for judging. Improvements presented must have been completed in the past year.

Make sure your Grange name is on the front cover of the notebook. Include photographs, especially "before and after" pictures, and a summary of the projects in 500 words or less. Include newspaper clippings about your endeavor. Helpful facts to including in your report: a listing of major expenses; source of funds for improvement projects; and details about the volunteers who helped (both members and non-members).

To enter, send the notebook directly to the Washington State Grange.

Entries must be postmarked no later than May 15.

Four top entries will be selected. They will receive an interior wall plaque and cash awards of \$500 of first place, \$300 for second place, \$200 for third place, and \$100 for fourth place. Each Grange that

enters will receive a large metal Grange logo sign.

The contest is sponsored by the Grange Cooperative Group, which is made up of the Washington State Grange, the Washington State Grange News, and the Grange Insurance Association.

REASONS TO BELONG TO THE GRANGE

1. Enjoy a direct voice in the state legislative process.
2. Have a voice in Washington, DC through the National Grange.
3. Travel benefits (rental cars, hotel discounts, etc.)
4. Availability of dozens of college scholarships.
5. Access to numerous State Grange social activities.
6. Grange camper clubs statewide.
7. Ability to participate in community service in virtually every community.
8. Support of leadership development activities for youth.
9. Enable an active Junior Grange or 1+ program for children.
10. Educational programs for children, youth, and adults.
11. Support for community, county, and regional fairs.
12. Availability of leadership opportunities.
13. Active promotion of initiatives to benefit the state's agricultural industry and rural Washington.
14. Numerous contests and hobby activities.
15. Auto, farm and home insurance available through the Grange Insurance Group.
16. Development of Grange Youth programs at fairs across the state.
17. Opportunity to make new friends.
18. Subscription to the Washington State Grange News.

19. Pride of belonging to a 157-year old organization with a distinctive pro-active history.
20. The opportunity to improve each community across our state.

GRANGE CAMPER ASSOCIATION

Grange Camper Association members have a great time all year long and they are actively looking for others to join in the fun.



Across the state, there are seven active camper clubs, all involving Grange members in enjoyable gatherings and excursions with their recreational vehicles. The clubs are linked together through the Grange Camp Association of Washington, which hosts an annual Fun Rally each spring.

Camper Association spokesperson Verne Figg encourages all Grangers with RV's to get involved. Interested members may contact the State Grange Office for current information on camper association leadership.

WASHINGTON STATE GRANGE FOUNDATION

Foundation General Fund

In an effort to help students further their education, the Washington State Grange, through its foundation, continues to offer scholarships to qualified students as funds from current contributions or interest from dedicated funds become available. The foundation fund is a qualified tax-exempt foundation. Donations to the fund are tax deductible.

Memorial Record Book

A permanent record of those memorialized by contributions to any of the funds within the foundation is maintained in the book of memories and kept in the historical cabinet at the State Grange Headquarters in Olympia.

King Memorial Fund

The King Memorial Fund is used primarily to purchase recreational equipment for the Junior Grange camping program.

Junior Grange Campship Fund

The Junior Grange Campship Fund is used to award partial campships to campers in the Junior Grange camping program.

Historical Fund

In 1964, the delegate body of the Washington State Grange voted to establish a Grange historical fund.

Wills and Bequests

Grange members are encouraged to remember the Washington State Grange foundation in their wills and bequests. For more information, please contact the State Grange President.

WASHINGTON STATE GRANGE SCHOLARSHIPS

Scholarships are offered each year through the Washington State Grange Foundation to assist Grange member attending college.

Applications for scholarships will be taken through April 1 of each year for the following school year. Requirements vary for the different scholarships.

Additional information about the State Grange Scholarship program and an application form are available by writing, calling, or emailing the Washington State Grange. Forms are

also available online at www.wa-grange.com

Family Living Scholarship Fund

Two categories of scholarships are offered each year from funds collected by the Grange Family Living Department. The number of \$750 one-year scholarships granted depends upon the amount of funds accumulated during the previous year. Applicants for the family living scholarships must have been Grange members for at least one year.

One Family Living scholarship category is for students pursuing vocational education. The other category is for individuals enrolled in home economics studies.

Application forms and complete information on family living scholarships are available for potential applicants directly from the Washington State Grange



- **Kegley Agricultural Scholarships** (must have completed two years of college)
- **Norman Buchholz Agricultural Scholarships** (up to \$2,500)
- **Kittleson Memorial Agricultural Scholarships**
- **Horace Bozarth Scholarship** (Ag or Home Economics)
- **Kiona-Benton (Koss Memorial) Scholarship**
- **Martin & Grace Forry Scholarship**

Applicants for these scholarships must be high school seniors or graduates already enrolled in institutions of higher learning. They must be a Grange member in the State of Washington.

The one-year scholarships may be used at any institution offering courses leading to a certificate or degree in some field of agriculture. This includes community colleges.

The recipients must be majoring in some field of agriculture (or home economics for the Bozarth Scholarship). Payments will be made directly to the college after notification of student's registration.



- Adrian & Betty DeVries Memorial Scholarship
- Delpha Goude Scholarship
- Marion & Snowie Vanderpool Scholarship
- Riverview Grange Scholarship
- Fox Island Grange Scholarship
- Nob Hill Grange Scholarship
- Ray & Marian Kamerrer Scholarship
- Enga M. Anderson Scholarship
- Bear Creek Scholarship
- Rock Creek Scholarship
- French Creek Scholarship
- McCleary Grange Scholarship
- Pomona Villa Scholarship

Applicants for these scholarships must be high school seniors or graduates already enrolled in institutions of higher learning. They must be a Grange member in the State of Washington.

The scholarships may be used at any institution offering courses leading to a certificate or degree in a recognized profession or vocation. Each

scholarship is for one year and is a minimum of \$750.

Marie Snyder Memorial Scholarship
Applicant must be a senior at Kahlotus or Washtucna schools or a member of Ralston Grange.

Only applicants should request the application forms. **All portions of completed applications must be in the State Grange Office by April 1.** Applications will be available to download from our website after January 1 each year or request application forms from:

Washington State Grange
Foundation
PO Box 1186
Olympia, WA 98507-1186
Phone: 360-943-9911
Email: grange@wa-grange.com



*American Values.
Hometown Roots.*

COOPERATIVE ACTIVITIES

The Grange recognizes that cooperatives can assume many forms and provide benefits to their members/owners in widely differing business and service sectors. The Grange has always encouraged the formation of new cooperatives and we feel that cooperative businesses can be highly beneficial to all who participate. The Washington State Grange recognizes that the cooperative business model can be a tremendous force for achieving economic development in our rural communities. The State Grange encourages its members to actively participate in cooperative ventures of all types, both existing cooperatives and emerging co-ops, to promote the economic well-being of all regions of our state.

We support the activities of the Northwest Cooperative Development Center in forming new cooperatives and assisting existing cooperatives and urge the cooperatives to consider mergers and joint ventures as ways to facilitate better service and cost savings for their members/owners.

We encourage cooperative board members and personnel to attend training sessions to enhance the quality of products and services they provide to the members/owners.

We encourage each Grange to have a program about cooperatives to educate their members and community.

We commend the efforts of the WSDA to promote cooperative ventures as a means of rural business development in Washington State and we urge that increased funds be allocated for this purpose.

LECTURER DEPARTMENT

State Lecturer

Leslie Jo Wells
18232 201st Avenue SE
Monroe, WA 98272
360-306-0905
lesliewells@att.net

State Lecturer Team Members

Sherry Cummins
781 Regal Rd.
Elk, WA 99009
509-292-8643
sherry.cummins@klmfg.com

Brenda Lester
31311 NE 122nd Ave
Battle Ground, WA 98604
360 687-3900
jamesbrenda2@msn.com

Anita Mastin
2913 Dale Lane E
Fife, WA 98424
253 380-4969
amastin253@gmail.com

MISSION STATEMENT

The mission of the State Grange Lecturer Department is:

- To provide educational material and encourage programs that will educate and entertain both Grange members and non-members
- To provide opportunities for Grange members to showcase their talents and skills
- To encourage Granges and Grange Lecturers statewide in developing relevant projects and programs to benefit their Granges and communities
- To provide a set of programs/projects that can be adapted for use in all Granges across the state
- To assist Granges in developing programs and activities that will increase Grange awareness across the state



*American Values.
Hometown Roots.*

**The Washington State Grange
may not be held liable for any
items lost or damaged in any
Grange contest.**

SUMMARY OF 2024 DATES LECTURER PROGRAM

2024

January	February	March	April
Su 1 2 3 4 5 6 7 8 9 10 11 12 13 14 15 16 17 18 19 20 21 22 23 24 25 26 27 28 29 30 31	Su 1 2 3 4 5 6 7 8 9 10 11 12 13 14 15 16 17 18 19 20 21 22 23 24 25 26 27 28 29 30 31	Su 1 2 3 4 5 6 7 8 9 10 11 12 13 14 15 16 17 18 19 20 21 22 23 24 25 26 27 28 29 30 31	Su 1 2 3 4 5 6 7 8 9 10 11 12 13 14 15 16 17 18 19 20 21 22 23 24 25 26 27 28 29 30 31
May	June	July	August
Su 1 2 3 4 5 6 7 8 9 10 11 12 13 14 15 16 17 18 19 20 21 22 23 24 25 26 27 28 29 30 31	Su 1 2 3 4 5 6 7 8 9 10 11 12 13 14 15 16 17 18 19 20 21 22 23 24 25 26 27 28 29 30 31	Su 1 2 3 4 5 6 7 8 9 10 11 12 13 14 15 16 17 18 19 20 21 22 23 24 25 26 27 28 29 30 31	Su 1 2 3 4 5 6 7 8 9 10 11 12 13 14 15 16 17 18 19 20 21 22 23 24 25 26 27 28 29 30 31
September	October	November	December
Su 1 2 3 4 5 6 7 8 9 10 11 12 13 14 15 16 17 18 19 20 21 22 23 24 25 26 27 28 29 30 31	Su 1 2 3 4 5 6 7 8 9 10 11 12 13 14 15 16 17 18 19 20 21 22 23 24 25 26 27 28 29 30 31	Su 1 2 3 4 5 6 7 8 9 10 11 12 13 14 15 16 17 18 19 20 21 22 23 24 25 26 27 28 29 30 31	Su 1 2 3 4 5 6 7 8 9 10 11 12 13 14 15 16 17 18 19 20 21 22 23 24 25 26 27 28 29 30 31

January/February

Lecturer Conferences and Leadership Conferences at various locations across the state

April

April is GRANGE MONTH

15 - All Creative Writing Contest Entries due to State Lecturer (postmark date)

May

15 - Pomona Lecturer Report Forms for Photography and Arts & Crafts Contests due to State Lecturer

June

26th 1 PM – 27th 12 Noon State Contest Entries (Photography, Arts & Crafts) check-in at the State Grange Convention

26 - 30 - State Grange Convention @ Stevens County Fairgrounds, Colville, WA

October

31 - State Grange Fair Booth Contest Entries due to State Lecturer (postmark date)

November

12-16 - 158th National Grange

Convention, Bettendorf, IA

December

31 - Annual Lecturer Report from all Subordinate and Pomona Granges due to State Lecturer

LECTURER FUND RAISING ACTIVITIES

The Lecturer Department, along with other Grange Departments, receives funding from the budget of the Washington State Grange. It is our desire to raise additional funds so that we may increase our programs and activities. The primary fund-raising activity for the Lecturer Department is the live and silent auctions held at the State Grange Convention. Donations for the auction are accepted and encouraged so that we may continue working for the benefit of the program and of the Grange. Please contact your State Lecturer Team Member for additional details on the auction and other fund-raising activities.

LECTURER EDUCATIONAL PROGRAMS – 2024

The following subjects have been selected by the State Lecturer Team as our educational topics for 2024. Each lecturer is encouraged to select from these subjects for their education programs. The educational program may be a speaker, discussion, debate, or it may follow another format. You may also ask a member to research the subject and report back to your Grange members. Be creative in the format of your programs and use a variety of education methods to keep your members informed. Information

on the following subjects will be included in your Lecturer packet and on the State Grange website.

Candle Lighting Ceremony – Start the new year by conducting the State Grange Candle Lighting Ceremony.

Parliamentary Procedure – The use of parliamentary procedures keeps your Grange meetings on track and allows members to participate in an orderly manner.

Mentoring New Members/Granges – Mentoring is a tried and true method for using past experience of your members to assist new members or Granges in the Grange experience.

Rural Minds – This is a 501(C)(3) nonprofit organization National Grange is partnering with whose mission is to serve as the informed voice for mental health in rural America, and to provide mental health information and resources.

Flag Etiquette – Present information on the proper display and use of the US Flag.

Let's Take A Trip – Provides an opportunity for members to share their experiences on a trip they took.

Remember When.... - This program can be a fun one depending on how it is presented. You could make it about Grange, your younger years, your community. This is another program that you can have other members present.

Heirloom Program – A National Program spanning five years designed to remind and educate our members on the cornerstone of what it is to be a Grange and Grangers.

Safety – Select a Safety topic that would be of interest to your members.

Programs of Opportunity - Work with other Grange departments and encourage them to prepare a program on an appropriate subject for your Grange members:

Family Living

Youth/Young Adults (Grange or other)

Junior Grange or Grange Camp
Community Service

Other Available Programs – The National Grange has material available for educational programs. Visit the National Grange website: www.nationalgrange.org. Topics include the Patriots Program (DVDs and Certificates) available on WWII, Korean Conflict and Vietnam



GRANGE MONTH

Grange Month is celebrated in April. The purpose of Grange Month is to let your community know what the Grange is doing across the state and nation. The National Grange will prepare a packet of information that will be available on the National Grange website: www.nationalgrange.org

In recognition of Grange month, we ask each Grange to hold some type of Grange awareness program. This may be an Open House or Special Program at your Grange Hall or you may want to

set up a Grange promotional display in your community. The display should include the Grange emblem, name and number of the Grange, and the name and number of a contact person. The National Grange asks each Grange to have an open house to celebrate the Grange during the month of April. Please report your Grange month activities on your annual report and on the special Grange Month report form available within the material on the national website.

GRANGE FAIR BOOTH CONTEST

The objective of the fair booth program is to improve public opinion of the Grange and the community it serves by telling the story of agriculture. Rules for the contest are as follows:

1. Entries are due to the State Lecturer, postmarked by October 31.
2. The entry shall consist of a report (400 words maximum) describing the display and shall be accompanied by photographs and/or newspaper clippings. All photos and clippings shall be attached to a piece of paper/cardstock – in other words...no loose clippings or photos. Clear, concise photos are important since the judges cannot see the actual booth. The report shall be no more than 8 total pages. The entry must be in a folder of some type (No hard cover binders.) Judging will be done by three qualified judges.
3. The front page of the report shall include the following information: Grange name and number, name of the fair entered,



4. contact person's name and mailing address, and division entered.

5. Subordinate Granges: There will be two divisions: Division I - Produce; and Division II - Project. Each subordinate Grange putting a display in any fair are eligible to enter the contest. Granges participating in multiple fairs may have multiple entries. Prizes in each division are sponsored by the Washington State Grange and will be: First Place - \$100; Second Place - \$75 and Third Place - \$50.

6. Pomona Granges: There will be two divisions: Division I - Produce; and Division II - Project (either agricultural, educational, or informational). Each Pomona Grange putting a display in any fair is eligible to enter the contest. Pomona Granges participating in multiple fairs may have multiple entries. Prizes in each division will be: First Place - \$100; Second Place - \$75 and Third Place - \$50.

7. Grange Youth Groups: Grange Youth (ages 14-35) Groups creating a display and entering it in the name of the youth group at any fair are eligible for this class in the state contest. All displays will be judged in one division using the Project Division Score sheet. Prizes, sponsored by the Washington State Grange, are: First Place - \$50; Second Place - \$30; and Third Place - \$20.

8. Judging criteria in the Produce Division: Booth Arrangement and Design - 200 points; Livestock Products (quality, quantity, and variety) - 200 points; Agricultural Products/Seeds/Grains (quality, quantity, and variety) - 200 points; Horticultural Products (quality, quantity, and variety of herbs, forest products, fruits, nursery stock, flowers, etc.) - 200 points; and Vegetables (quantity, quality, and variety) - 200 points; total of 1000 possible points.

9. Judging criteria in the Project Division: Choice of Message - 20 points; Supporting Data - 30 points; Visualization of Message/Design of Display - 30 points; and Originality - 20 points; total of 100 possible points.

OPEN HOUSES AND BOOSTER PROGRAMS

The purpose of a booster night program is to promote the Grange and to encourage people to join our organization. It is also a time to revitalize interest in the Grange among our members who may not attend on a regular basis. The State Grange Master will prepare a booster night message and send it to each Grange. You are encouraged to plan an informational program for the public. Be creative in the program you develop. Be sure to list what you did on your annual lecturer report.

LECTURER REPORTS AND RECOGNITION

The annual lecturer report is the only mechanism we have to determine if our programs are effective. With that in mind, we ask that you take a few minutes to

complete the report and send it to the State Lecturer by the December 31 deadline.

Pomona Grange Recognition

Certificates will be presented to all Pomona Granges completing a report. The certificate will reflect the level of achievement accomplished by the lecturer. Outstanding Lecturer Awards will be presented to up to five Outstanding Pomona Grange Lecturers, based upon the annual report.

Subordinate Grange Recognition

Certificates will be presented to all Lecturers reflecting their level of achievement over the course of the year. Outstanding Lecturer Awards will be presented to up to ten Outstanding Subordinate Grange Lecturers, based upon the annual report and participation in the following activities.

- Presentation of at least three (3) educational programs at your Grange during the year.

- One (1) entry in any contest sponsored by the Lecturer Department

- Holding two (2) special observances in your Grange...one must be a Grange promotional activity (Grange Month Program/Activity, Fair Display, or Booster Program)

- Attendance at any one (1) Lecturer or Leadership conference at any level.



STATE GRANGE PHOTOGRAPHY CONTEST

1. This contest is open to both Grange members and non-members. Non-members must be sponsored by a subordinate Grange. Receiving compensation of any kind does not prohibit a member from taking part in the contest.



2. The photographer must select the class for his/her entry.
3. A print may be entered in only one class.
4. Participants may enter all classes using separate prints.
5. Participants may have more than one entry per class. This will allow for a bigger and better photography contest at the Pomona level.
6. Entries must have been completed after May 15 (or the Pomona judging date) of the previous year.
7. Prints may be made by a commercial processor but must have been taken by the entrant.
8. Photo manipulation: Only minor manipulations, such as color corrections, elimination of red eye, or cropping are allowed for adult Classes A – U and Youth Classes BA – BI.

A new class for **Manipulated** photos has been added for Adults and Youth. These new classes, **Adult Class V** and **Youth Class BJ** include photos that have been altered/edited using photo manipulation software.

9. At the state level, matting and backing with matte board is required for all photos. There must be a minimum 1" mat margin on all sides and a maximum mat margin of 2 ½" on all sides. Please be sure the photo is securely attached. **NO FRAMES OR COVERINGS OF ANY TYPE.**

10. The Pomona Lecturer has the authority to adjust the rules as necessary for the Pomona contest, including whether matting is required at the Pomona level.

11. Photos must be a minimum size of 5"x 7" and a maximum size of 11"x 14". This does not include the mat.

12. Title is optional.

13. Age of contestants in the youth and junior groups will be as of January 1 of the current year.

14. **The State Grange assumes no liability for loss or damage to entries.**

15. All entries will be judged at the Pomona level. The highest scoring entry in each class should receive a purple ribbon and be forwarded to the state contest, held during the State Grange Convention in June.

16. Judging in the photography contest will be based on:

Category Fit, Quality, Interest, Composition, and Presentation.

17. All entries will be awarded ribbons. Best of Class Rosettes will be awarded at the state level to the highest placing entry in each class.

18. State Level Monetary Awards:
Adult Groups

Best of Show Photo - \$50

Second Best of Show Photo - \$25

Youth and Junior Groups

Best of Show Photo - \$25

Second Best of Show Photo - \$15

GROUP I - Adults, age 20 and over

Section I - Single Printed Photos (color, black/white, or digital)

Classes:

- A. Scenic Photos
- B. Washington My Home (scenes, sights, and people from WA)
- C. Animals/Pets
- D. Birds
- E. People
- F. Portraiture
- G. Historical
- H. Agriculture and Farming
- I. Celebration(s)
- J. Water
- K. Flora
- L. Winter
- M. Spring
- N. Summer
- O. Autumn/Fall
- P. Insects & Bugs
- Q. Grange Activities
- R. Recreational Activities
- S. Lines, Shapes or Forms
- T. Transportation
- U. General Interest
- V. Manipulated

Group II - Youth, ages 14-19

Section 1 - Single Printed Photos (color, black/white, or digital)

Classes:

- BA. Scenic Photos
- BB. Animals/Pets
- BC. People
- BD. Food
- BE. General Interest
- BF. Grange Activities
- BG. Water
- BH. Flora
- BI. Recreational Activities
- BJ. Manipulated

GROUP III - Juniors, ages 5-13

Section 1 - Single Printed Photos (color, black/white, or digital)

Classes:

- CA. Scenic Photos
- CB. Animals

- CC. People
- CD. Food
- CE. General Interest
- CF. Grange Activities
- CG. Water
- CH. Flora
- CI. Pets



CREATIVE WRITING CONTEST

1. This contest is open to Grange members only. Remember we no longer have categories for younger than 14 years old.



2. All entries must be either typed or neatly written in ink on 8 ½" x 11" paper. Illegible entries will be disqualified.

3. The following should be placed on the top right corner on the front of the entry: Name of entrant, Grange name and number, and Group/Class entered.

4. The Poetry Topic for 2024 is "Zoom". There is a 500-word limit.

5. The Short Story Topic for 2024 is "My First Ride". The maximum length is 3 pages, double spaced.

Your short story/anecdote should entertain the reader.

6. All entries must be post marked by April 15th and sent to: Leslie Jo Wells, State Lecturer, 18232 201st Ave SE, Monroe, WA 98272.

7. Judging criteria: originality and organization; adherence to topic and contest rules; and grammar, spelling, punctuation, and neatness.

8. Prizes: All entries will receive blue, red and green ribbons. First, second, and third place in each class will receive rosettes. Cash prizes will be awarded as listed below.

Group A – Adults, age 20 and over

The Best of Show entry in this group will receive \$50 and the 2nd Best of Show entry in this group will receive \$25

A-1 – Poetry – Metered

A-2 – Poetry – Free Verse

A-3 – Short Story

Group B – Youth, ages 14-19

The Best of Show entry in this group will receive \$50 and the 2nd Best of Show entry in this group will receive \$25

B-1 – Poetry – Metered

B-2 – Poetry – Free Verse

B.3 – Short Story

ARTS & CRAFTS CONTEST

1. This contest is open to both Grange members and non-members. Non-members must be sponsored by a subordinate Grange.

2. All work must be the work of the exhibitor. Entries must have been completed after May 15 (or Pomona judging date) of the previous year.

3. Participants may have more than one entry per class at the Pomona level.

4. Exhibitor must assure that their entry is entered in the correct class.

5. Soiled items will not be accepted.

6. All entries will be judged. Any entry deemed inappropriate by the person in charge of the contest may not be displayed.

7. Any entry that is intended to be hung must be ready for hanging with the appropriate hanging device attached.

8. Age of youth and junior contestants will be as of January 1 of the current year.

9. All entries will be judged at the Pomona level. The highest scoring entry in each class at the Pomona contest should receive a purple ribbon and forwarded on to the state contest, to be held at the State Grange Convention in June. The Pomona Lecturer has the option of bypassing this rule if only one entry is received at the Pomona level and that entry is deemed to be of inferior quality.

10. **Contestants at the state level must be responsible for bringing their items to the state convention and picking them up at the designated time.**

11. Valuable items should be adequately insured by their owners before being sent to the state convention. **The State Grange assumes no liability for loss or damage to entries.**

12. Judging in the craft contest will be based on: appearance, design, originality and creativity, workmanship and item appropriately finished

13. Awards: Pomona contest awards are the responsibility of

the Pomona Grange. All entries should be awarded ribbons - purple, blue, red, white, or green. State contest awards will be awarded by the State Grange Lecturer Department. Ribbons will be awarded to all entries. Rosettes will be awarded to the top entry in each class.

14. The Best of Show entry in each Group A-I will receive \$50 and the 2nd Best of Show in the same groups will receive \$25.

15. The Best of Show entry in each Group J-K will receive \$25 and the 2nd Best of Show in the same groups will receive \$15.

Group A - Paintings and Drawings, Adults, ages 14 and over

Original artwork must be entered. Prints and/or copies will not be accepted. All entries in this group must be framed or have a firm backing so they can be properly displayed.

- A-1 Oils
- A-2 Acrylics
- A-3 Watercolors
- A-4 Mixed Medium
- A-5 Drawings – Any Medium
- A-6 Miniature (3"x3"max.) – Any Medium
- A-7 Other

Group B - Fiber Craft/Needle Arts, Adults, ages 14 and over

- B-1 Weaving
- B-2 Embroidery, Hand
- B-3 Knit, any item
- B-4 Crochet, any item
- B-5 Counted Cross Stitch (framed)
- B-6 Counted Cross Stitch (Unframed)
- B-7 Plastic Canvas
- B-8 Other Fiber Craft
- B-9 Other Needle Art

Group C - Holiday/Seasonal/ Celebration Crafts, Adults, ages 14 and over

- C-1 Christmas Ornaments
- C-2 Christmas Decorations
- C-3 Thanksgiving Decorations
- C-4 Halloween Decorations
- C-5 Other Holiday Decorations
- C-6 Non-Holiday Decorations
- C-7 Seasonal Decorations
- C-8 Other Celebration Décor



Group D - Wood Crafts, Adults, ages 14 and over

- D-1 Woodworking (with a finish)
- D-2 Woodcrafts (without a finish)
- D-3 Wood Birdhouse
- D-4 Wooden Toy
- D-5 Any Woodworking Item (ages 14-19)
- D-6 Other Wooden Item

Group E – Recycled Crafts, Adults, age 14 and over

All items in this group must clearly be recycled.

- E-1 Recycled Fabric/Fiber
- E-2 Recycled Wood
- E-3 Recycled Metal
- E-4 Recycled Plastic
- E-5 Recycled from Any Other Item

Group F - Constructive Crafts, Adults, age 14 and over

- F-1 Glass Craft
- F-2 Metal Craft
- F-3 Sculpted Clay/Pottery
- F-4 Yard Art
- F-5 Ceramics, Any item
- F-6 Leathercraft
- F-7 Other Constructive Crafts

Group G - Paper Crafts, Adults, age 14 and over

- G-1 Handmade Card (holiday) – do not send envelope
- G-2 Handmade Card (all occasion) – do not send envelope
- G-3 Origami
- G-4 Quilling
- G-5 Adult Coloring, mounted on a stiff backing
- G6 Other Paper Craft

Group H - General Crafts, Adult, Ages 14 and over

- H-1 Beading
- H-2 Jewelry
- H-3 Decorative Painting
- H-4 Wearable Art
- H-5 Toys (other than wood)
- H-6 Nature Craft – no live plants
- H-7 Flower Arrangement/Corsage - dried or silk, no live plants
- H-8 String, Cord, or Macrame
- H-9 Other General Craft Item

Group I – Grange Promotional Art/Craft, Ages 14 and over

All items in this group must be used to promote the Grange and/or Grange activities. State/National Grange generated items are not eligible. No DVDs, CDs or electronic media.

- I-1 Grange Promotional Brochure
- I-2 Grange Event Flyers
- I-3 Posters
- I-4 Promotional T-shirt/Vest
- I-5 Other Promotional Art/Craft Items

Group J - Arts & Crafts, Children, Ages 10-13

Paintings and drawings must be either framed or mounted with a firm backing.

- J-1 Paintings, any medium
- J-2 Drawings, any medium
- J-3 Lego Item – From a kit
- J-4 Lego Item – Not a kit

- J-5 Wood Craft
- J-6 Fabric/Fiber Craft
- J-7 Paper Craft
- J-8 Decorations
- J-9 Wearable Art
- J-10 Any Item made from a Kit – Other than Legos
- J-11 Other Arts & Craft Items



Group K - Arts & Crafts, Children, Ages 5-9

Paintings and drawings must be either framed or mounted with a firm backing.

- K-1 Paintings, any medium
- K-2 Drawings, any medium
- K-3 Lego Item – From a kit
- K-4 Lego Item – Not a kit
- K-5 Wood Craft
- K-6 Fabric/Fiber Craft
- K-7 Paper Crafts
- K-8 Decorations
- K-9 Wearable Art
- K-10 Any Item made from a Kit – Other than Legos
- K-11 Other Arts & Crafts Items

LECTURER'S SERVICE PROJECTS

STATE GRANGE DEAF FUND

Granges are encouraged to support the deaf community with their donations to the State Grange Deaf Fund. Donations are collected annually and then forwarded to organizations who support deaf awareness programs. Past recipients have included the Dogs for the Deaf Program, the WA State School for

the Deaf, and the SW WA Center for the Deaf and Hard of Hearing. Checks should be made payable to the Washington State Grange and sent to the State Grange Lecturer.

AGRICULTURAL EDUCATION CHARITY SUPPORT

Washington Agriculture In the Classroom (WAIC) was organized by volunteers in 1983 as a nonprofit organization. The volunteer WAIC Board oversees all WAIC activities and finances, including the *Ag@School* magazine distribution, teacher outreach and funding promotion. The WAIC office is located in Lacey in the Farm Bureau building. Donations may be made to WAIC and sent to: PO Box 3638, Lacey WA 98509-3638.

CONTEST TRAVEL FUND DONATIONS

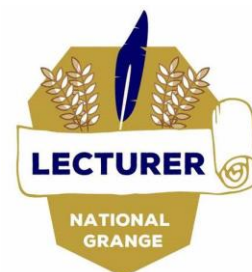
Each year, our state can send a delegation to the National Grange Convention for participation in the various programs. This includes, but is not limited to public speaking and sign-a-song participants, youth ambassadors, and national youth officers. The State Grange tries to pay flight and occasionally lodging costs for these participants. Donations to cover these expenses are graciously accepted. Please send your check, made payable to WA State Grange, to the State Grange Office and designate it for the Travel Fund.

PROMOTING COMMUNITY SERVICE PROGRAMS

The Lecturer's Department will continue to promote and support the following Community Service activities:

- Outstanding Community Volunteer
- Partnering with Schools
- Keep Washington Warm (Youth)
- Words for Thirds
- Book Collections
- Personal Care Items
- Feed the Hungry
- Support for Junior Grange Programs

We will also promote and support other departments with their choices of Community Service Projects.



NATIONAL LECTURER PROGRAMS AND CONTESTS

Please refer to the 2024 National Grange Program Handbook for guidelines, entry deadlines, etc. For the following National Grange Lecturer contests:

- Quilt Block Challenge
- Virtual Photo Contest
- Garden Design Contest
- Weather Watcher Challenge
- Design-a-Program Contest

COMMUNITY SERVICE DEPARTMENT



Community Service Team

Heather Ferguson -Director

Leslie Wells – State Lecturer

Helen Berg – Family

Living Director

Jerry Gwin – Youth Director

The State Grange Community Service Program continues to undergo annual changes. It is important to note that the community service contest is only one part of the total community service program. Granges are encouraged to participate in as many community service projects as possible and to report their efforts to the State Grange. The reporting year for community service is June 1 to May 31, annually.

POMONA GRANGE AWARD FOR PUBLIC SERVICE

The Pomona Award for Public Service is presented by a Pomona Grange to either a member or non-member individual or group.

The award is a certificate, which comes with a 10" x 12 ½" walnut finish plaque with plexi-glass cover. You may obtain your own award or you may order the national award from the National Grange Store at the National Grange Office. Please plan on four weeks for delivery of awards.

SUBORDINATE GRANGE COMMUNITY CITIZEN AWARD

This is an excellent opportunity to promote your Grange to reward an individual or group in your community for their involvement or outstanding achievements. The Community Citizen Award is presented by a Subordinate Grange to a non-member individual or group. The award is an 8 ½" x 11" certificate in a special folder, which bears the Grange emblem. A marble paperweight with a seven-sided Grange emblem on top and small brass plate for personalization may also be ordered. If you desire to obtain awards in your own community, you may do so. The key is to be sure that the Grange name and/or emblem is on any award you present. The award may be purchased from the National Grange Store. Please plan on four weeks for delivery of awards.

VOLUNTEER RECOGNITION PROGRAM

LAW ENFORCEMENT OFFICER
FIREFIGHTER/EMS
TEACHER
VOLUNTEER OR GROUP

Upon awarding the Community Citizen Award, each Grange is encouraged to nominate their local winner for State Grange Recognition. At the state level, we will recognize an "Outstanding Community Volunteer and/or Group", "Outstanding Law Enforcement Officer", "Outstanding Teacher" and "Outstanding Firefighter" each

year. Groups may not be Grange groups, but Grange members may be members of the group.

There is a one-page nomination form in the Community Service packet. All nominations for the state award are due by June 1 to the WA State Grange Office. Awards will be presented at the State Grange Convention. If the National Grange has awards available, the state winners will be forwarded on to the national level for consideration of those awards.

PARTNERING WITH SCHOOLS

Each Grange is asked to meet with their local school officials to determine how the Grange can support the educational system. Each school system is a little different. You may be surprised how your members can help. You may desire to continue the Reading Award Program, recognizing the outstanding or most improved readers in the school. You may want to award educational scholarships to graduating high school students. You may choose to assist the students by serving as tutors or lunch buddies. You may want to promote the "Ag in the Classroom" program and sponsor a local teacher for this program. There may be an afterschool program that needs tutors, instructors, or monitors. We encourage you to be creative and open minded in developing the project for your Grange and local school. We must reach out and "Imagine the Possibilities".

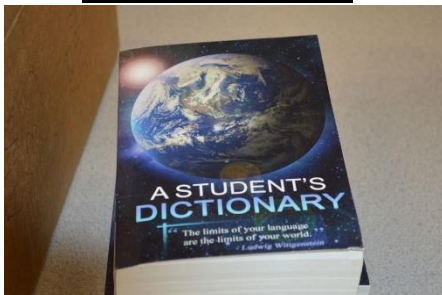
KEEP WASHINGTON WARM

In cooperation with the State Grange Youth Department, we will be collecting stocking caps, mittens, gloves, scarves, socks, coats, etc. for distribution to the less fortunate in our state. Items may be purchased or hand made. Donations should be delivered to the State Grange Convention. Grange youth will display the items and then distribute the items in the host convention area following the convention.

FEED THE HUNGRY

Granges are also encouraged to support their local food bank through food collections and assisting throughout the year. All donations should be made at the local level.

WORDS FOR THIRDS



We work with an educational program entitled “Words for Thirds”. The goal is to provide a dictionary for every third-grade student. Order forms and additional program material is available online at <https://www.dictionaryproject.org>. In large school districts, we ask the Grange to take the lead and solicit other organizations to assist in providing the dictionaries. By displaying our leadership qualities and taking the lead on this project in our communities, we can work to increase membership and prove

that the Grange is alive and strong in our communities.

BOOK COLLECTIONS

As an ongoing effort to support reading and education, we are asking each Grange to collect books and to donate them locally to schools, food banks, holiday gift programs, foster families, and homeless shelters. You may also wish to donate your books to programs for traumatized children.

SCHOOL SUPPLY COLLECTION

In cooperation with the State Grange Junior Department, we will be collecting backpacks, notebooks, writing supplies, coloring supplies, glue, thumb drives, ear phones, Kleenex, etc. for distribution to the less fortunate students in our state. Items may be purchased or cleaned and gently used where appropriate.

Donations should be delivered to the State Grange Convention. The Junior Department will display the items, pack and then distribute the items in the host convention area following the convention.

PERSONAL CARE ITEMS

The State Grange will again be collecting personal care items at the State Grange Convention. This will include soap, shampoo, tooth brushes, tooth paste, wash cloths, lotions, and numerous other items. It is important that **ALL ITEMS ARE TO BE UNOPENED, UNUSED AND UNDAMAGED.** You may drop your items off in the Community

Service Display area at the convention. All items are then distributed in the convention host county area. If you donate these items locally, be sure to note that on your community service report.

COLLECTION OF ALUMINUM CAN TABS

This program has been discontinued at the state level. Please evaluate this program at a local level to determine if it is still a good fit for your Grange.

POCKET CHANGE DRIVE for the RONALD McDONALD HOUSE CHARITY

Each Grange Community Service Chairman is encouraged to take up a spontaneous pocket change collection, for the Ronald McDonald House charity, at least once throughout the year. The collected money can be sent onto the charity yourself and reported to the Community Service chairman or the money sent to or turned in at convention and handed in at the Community Service Table.

JUNIOR GRANGE PROGRAM SUPPORT

Each Grange is asked to support the Junior Grange Program. You may contribute to an individual Junior Grange or to one of the Junior Grange Camps (please refer to the Junior Grange Section of the handbook). Some Junior Granges need assistance with craft projects or chaperones for field trips.

Financial contributions are needed for two funds set up in the Grange Foundation. The King

Memorial Junior Camping Fund allows camps to purchase needed equipment. The Campship Fund assists Junior Grangers to attend Junior Grange Camp one time per child.

Each Grange is asked to support the Junior Grange and our excellent camping program. Checks should be made payable to the WA State Grange Foundation and mailed to the State Grange Office. Please add a note stating where the funds should be placed.

OTHER SERVICE PROJECTS

Please refer to each department section of the handbook for a complete list of service projects being conducted at the state level.

**COMMUNITY SERVICE
CONTEST**

*Sponsored by the Grange
Cooperative Group, the WA
State Grange, and the National
Grange*

There are two classes of the State Grange Community Service Contest, based upon the membership (regular and associate combined) of the subordinate Grange as of March 31. The number of members reported should match the 3/31 Grange Secretary Report. The

State Grange has the authority to correct membership level, if reported incorrectly. Classes are:
o **Class I** - Subordinate Granges with 40 or less members
o **Class II** - Subordinate Granges with 41 or more and All Pomona Granges

Contest Rules:

- 1. The reporting period begins on June 1, 2023 and ends on May 31, 2024.
- 2. Completed reports/notebooks are due by June 1 to the WA State Grange Office. Any report received after June 5 will not be included in the contest judging.
- 3. Please refer to the guidelines for preparing your report, which are included in the community service packet.
- 4. Your community service report should consist of the following: the community service report form; report of your work explaining the need for the project; what you did and including recognition and pictures; and identification of your major project for the year. The more information you can provide and the more documentation you have will strengthen your report. Your main project should be stronger than the other projects and may require more pages and documentation than the others.

There is a maximum of 50 pages (front and back) or 100 total sides, not including the report form.
5. Your Grange name and number should be listed on the cover.
6. The following score card will be used in judging the community service contest: Need for the Project Selected – 20%; Program Plan – 15%; Cooperation Achieved – 20%; Project Evaluation – 20%; Community Involvement of Grange Members – 10%; Participation in State Grange Community Service Projects – 5%; Presentation of Report – 10%
7. Judging will focus on the projects initiated by your Grange, rather than following the leaders of other groups. Judges will evaluate the impact your Grange has had on the local community.
8. The Grange Cooperative Group will present awards in each class as follows: First Place - \$400; Second Place - \$300; Third Place - \$200; and Fourth Place - \$100.
9. If the National Grange sponsored a Community Service Contest, state judging will include the selection of our national contest representative.



*American Values.
Hometown Roots.*

MEMBERSHIP DEPARTMENT

SUBORDINATE GRANGE MEMBERSHIP INCENTIVE PROGRAM

This program will begin January 1, 2024 and end on December 31, 2024. Membership will be calculated based upon the Grange Secretary reports and awards will be presented at the 2025 WA State Grange Convention.

For the first 300 NEW Subordinate Grange members in the state, each Grange contributing to that number will have their Grange name entered into a drawing for each new member joining the Grange. There will be two drawings for a prize of \$250 each if we reach the goal of 300 new members. For each additional 100 members, we will add one more prize of \$250 each.

These must be new members only. Individual youth members will count if not in a family membership. What will not count? Demits, Reinstatements less than one year, Affiliates, Juniors, and E-Members.

JUNIOR GRANGE MEMBERSHIP INCENTIVE PROGRAM

This program will begin January 1, 2024 and end on December 31, 2024. Membership will be calculated based upon the Junior Grange Secretary reports and awards will be presented at the 2025 State Grange Convention.

For the first 50 NEW Junior Grange members in the state, each Junior Grange contributing to that number will have their Junior Grange name entered into a

drawing for each new Junior Grange member joining their Jr. Grange. There will be three drawings for a prize of \$25 each. For each additional 25 members, we will add one more prize of \$25 each. These must be new Junior Grange members only. These awards will be based on the Junior Grange Secretary reports submitted to the State Grange office. Reports are found at www.wa-grange.com Juniors/Contest Forms & Reports/Secretary's Report. Junior Secretary Reports are due March 31. **Junior 1+ members will count under the name of the Subordinate Grange.**

INDIVIDUAL GRANGE RECRUITER RECOGNITION

This program will begin on January 1, 2024 and end on December 31, 2024.

Recognition will be given to each Grange member who recruits new members during the calendar year.

Awards for recruiting new members may be earned by Grange members as follows:

- 3 members – a State Grange T-Shirt
- 8 members – a \$25 Amazon Gift Card
- Each additional 5 members – a \$25 Amazon Gift Card

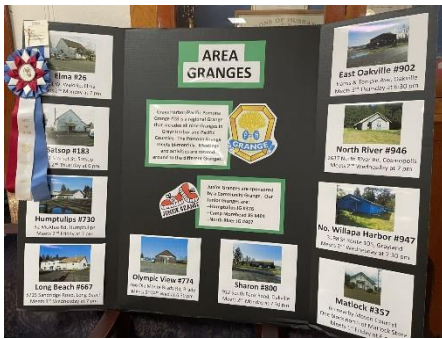
Information will be taken from the New Member reports. For family memberships, each new family membership will count as two entries. The awards will be cumulative and will be sent to the

recipients as they are earned throughout the year. Grange recruiters will also be recognized in *The Grange News*.

GRANGE MONTH DISPLAY CONTEST "GRANGE STRONG"

Rooted, Resilient, United

During Grange Month we encourage Granges to highlight their Grange in their communities and state in the form of a Grange Display. As we celebrate Grange month in April, Granges are encouraged to showcase their individual Grange and to also support other Granges by attending their activities. The State Grange Membership Department is having a Grange Month Display Contest to assist in promoting the Grange by portraying the positive influences the Grange has made on our communities, state and nation. For over 150 years, the Grange has worked to make our nation a better place for our citizens. We are active in 214 communities throughout the State of Washington, providing a wide range of services and offering multiple activities and programs. A public display of our Grange programs will assist in informing the citizens of your community of our programs and achievements. We ask that each Grange create a public display to promote the Grange and to focus on the positive impacts the Grange has made in our state.



Contest Information and General Guidelines

- Each Grange will arrange their own display area in a prominent public location in their community.
- Each Grange design a display featuring their projects and activities, with focus on positive impacts achieved in their community and state.
- The display should follow the theme **"GRANGE STRONG"**
- Grange programs should be represented (i.e. Lecturer, Family Living, Community Service, Legislative, Youth and Junior activities, etc).
- The display must be in place for a minimum of seven days during April.
- Each display must include a Grange logo and contact information for the local Grange.
- Each Grange is encouraged to take 3-5 pictures of their display (including one of the complete display).
- Place the pictures in a folder, with a 300-word (maximum) essay about the display and what you wanted to convey.
- Send the folder to the State Grange Office no later than May 1.
- Submit pictures of your display for promotion in The Grange News.
- Judging will be completed by a committee and will be based on originality, creativity, design, and

overall impact.

- Cash prizes will be awarded to the top three displays: \$100, \$50, \$25.
- All entries should be placed in a folder and sent by May 1 to the Washington State Grange, PO Box 1186, Olympia WA 98507.
- All entries will be displayed and available for pick up at the State Grange Convention.

GRANGE IN ACTION PROGRAM



The Grange In Action program is designed to encourage all Granges to be active in their communities and complete events or projects, no matter how large or small. Granges (Subordinate, Pomona, and Junior) who wish to be recognized at the 2024 State and National Grange convention as a "Grange In Action" should complete the following requirements:

- Submit a 1-page letter size with pictures and caption of at least 3 various events/activities that the Grange either sponsored or assisted with from Sept 1, 2023 to Sept 1, 2024. Anything over 1 page will be disqualified
- The Grange name, number and state must be on the front of the page
- Granges that qualify for the 2024 Distinguished Grange award are not eligible for this recognition at the national level.

• Entries should be brought to the State Grange Convention and turned in to the Membership Table prior to the opening of the convention. Entries will be made into a display of "Granges in Action" at the state convention. Additional entries may be submitted for display at the Washington State Fair in September. Entries from the State Grange Convention will be forwarded by the State Grange to the National Grange for national recognition. Your entry will not be returned.

• Additional entries may be submitted for National Grange recognition should be submitted no later than September 1, 2024 postmark or electronic by midnight on September 1, 2024.

• Mail to National Grange, Attn. Loretta Washington – 1616H Street, NW Washington, DC 20006

• Email to Loretta Washington at lwashington@nationalgrange.org please put in the subject line for the email: Grange in Action report.

• To be named a "State Grange in Action", a State Grange must have at least 6 Granges recognized as "Grange In Action."

• Some of the entries will be on display at next year's National Convention.

DISTINGUISHED GRANGE PROGRAM

The Distinguished Grange Program honors Subordinate and State Granges that fulfill their responsibilities as part of the National Grange, while excelling in areas of membership, fundraising and service to their

communities. The 2023-24 Distinguished Granges will be honored for their work done from July 1, 2023 through June 30, 2024.

The award for being named a Distinguished Grange is presented annually at the National Grange Convention at a special reception and mentioned in the convention

program. They will receive a certificate to commemorate their achievement. Granges that qualify as a Distinguished Grange for five consecutive years will receive a plaque.

Applications: Applications are available from the WA State Grange Office or on the National

Grange website:
www.nationalgrange.org.

The postmark or online submission deadline to submit your materials to be considered for Distinguished Grange is August 1, 2024. Applications received after this deadline will not be awarded Distinguished Grange.

JUNIOR GRANGE DEPARTMENT



State Junior Grange Director

Heather Ferguson
PO Box 336
Athena, OR 97813
503-307-7951
haann@hotmail.com

State Junior Leadership Team

David Lierman
1921 85th Drive SE
Lake Stevens, WA 98258
425-407-3199
Email: jmlierman@hotmail.com

Susan Hegney
1020 S. Little John Ct
Spokane Valley, WA 99206
509-995-7001

Debbie Smith
31819 108th Ave SE
Auburn, WA 98092
253-350-5369

Please visit the Washington State Grange Website for all forms and other detailed information.
<http://www.wa-grange.com>

Please refer to the National Grange Program guide for all contests and information on the 1+ Junior Grange Program.

<http://www.nationaljuniorgrange.org>



COMMUNITY (SUBORDINATE) & POMONA GRANGE INVOLVEMENT

There should be an active Junior Grange Development Committee and/or Leader in every community (subordinate) and Pomona Grange, with the chairperson listed in the roster.

Duties of the Junior Grange Development Committees and Leaders: Promote the Junior Grange and activities for children ages 5-14 in your area at all times.

Steps in Organizing or Reorganizing a Junior Grange:

1. Contact the State Director, program directors or deputy.
2. Download the guidebook from www.nationaljuniorgrange.org

JUNIOR GRANGE 1+ PROGRAM

If any local area does not have 13 children ready for a Junior Grange, use the 1+ program. Any Subordinate/Community Grange,

anyplace in the Nation, can start with a single Junior Grange-age child and build a Junior Grange Program from there. The process to start a Junior Grange 1+ program is easy. All Subordinate Granges with 1+ Junior members must name a Junior Grange Committee Chair. Please see the National Grange website for detailed information on this program:
www.nationaljuniorgrange.org

JUNIOR GRANGE SUMMER CAMPING PROGRAM

Grange camps are conducted at six locations across the state and are open to all children who are 9-14 years old. Grange membership or affiliation is not required. Camp brochures giving detailed information are available in the winter/early spring from the State Grange website, or your local Junior Grange camp director. Camps and locations for 2024 include:

- **Camp Wooten** located in southeast Washington. Dawn Yearout, director, 509-989-7057
- **Camp Morehead** located on the Long Beach Peninsula. Tom Gwin, director, tagwin0181@outlook.com
- **Camp David, Jr.** located in Clallam County. Cindy Kelly, Director, 360-460-9549
- **Camp Mayfield Lake** in Lewis County Washington. Jennifer and

Marvin Oliver, directors (253) 906-6078 or (253) 906-6075.

- **Camp NEWA** in Stevens County. Information on Camp NEWA to be determined.

- **Camp Cornet Bay** at Deception Pass. Kathy Knott, Camp Registrar, 253-350-1807

Pre-registration dates are set by individual camps. Send the pre-registration information to the contact listed on the camp brochure, not the State Grange Headquarters nor the camp. Campers will be limited to the capacity of the camp. A late registration fee may be charged if not received by noted registration deadlines.

CAMP FUND DONATIONS

Junior Grange Campship Fund: Campers may receive financial assistance to attend Junior Grange camp. Originally set up in memory of Richard Kimball, the camper may receive assistance one time to attend camp. It may be a first time attendee or an experienced camper. Assistance for any of the six camps in Washington State is available. To apply, please submit a letter and application requesting a campship. Letters are due June 1st. Mail letters to the Washington State Grange. For more information, please contact your camp director or the Washington State Grange. Application forms can be found at www.wa-grange.com

King Memorial Camping Fund is used to replace worn out recreation equipment and other needed supplies in our camping program.

To donate to either of the above programs, please make your check payable to the Washington State Grange Foundation and note on the check which fund you are donating to. Mail to: Washington State Grange, Foundation Fund, PO Box

1186, Olympia, WA 98507-1186. All contributions are appreciated. Donations may also be made to individual camps by contacting the individual camp director.

Pre-registration dates are set by individual camps. Send the pre-registration information to the contact listed on the camp brochure, not the State Grange Headquarters nor the camp. Campers will be limited to the capacity of the camp. A late registration fee may be charged if not received by noted registration deadlines.

WASHINGTON STATE JUNIOR GRANGE COMMUNITY SERVICE PROJECT

The Washington State Junior Grange, in cooperation with the State Grange Junior Department, will be collecting school supplies, backpacks, notebooks, writing supplies, coloring supplies, glue, thumb drives, ear phones, Kleenex, etc. for distribution to the less fortunate students in our state. Items may be purchased or gently used and cleaned where appropriate.

Donations should be delivered to the State Grange Convention. The Junior Department will display the items, pack and then distribute the items in the host convention area following the convention to various children's organizations.



CONTESTS & AWARDS



The contest year for the State Junior Grange Program runs from January 1 to December 31. Exception – The Junior Granger of the Year will run May 1 to April 30.

All contest entries must be postmarked by June 1st and sent to the State Director. Exception: all Junior Dept. crafts and poster boards are to be brought to and delivered to the State Junior Leadership team on the first day of State Convention.

COMMUNITY SERVICE AWARD

To give Junior Grangers recognition for reaching out to the community and giving them the opportunity to practice citizenship by showing concern for the communities they live in.

Open to all Junior Granges. Forms will be available on the Grange Website. Awards: This contest is sponsored by the Grange Cooperative Group. \$250 first place, \$150 second place, \$100 third place. Certificates will be awarded for all entrants.

NED CULLEN AWARD

Sponsored by the Cullen Family

Each year a special award is presented by the Washington State Grange Department, in loving memory of Ned Cullen. Ned strongly

promoted the Junior Grange and was an avid Junior Grange camping program volunteer. His love for the Junior Grangers he met never ended. This award is presented at state convention to the Junior Grange or 1+ program with the most involved program, the most-timely reports and excellent overall participation in the program.

The name of the Junior Grange or 1+ program receiving this award goes on a plaque that hangs in the boardroom at the state headquarters in Olympia. The Junior Grange that is selected also receive a plaque from the state Junior Department and a cash award from the Cullen Family of Yakima County.

JUNIOR GRANGE LEADER OF THE YEAR

A Junior Grange Leader of the Year will be selected annually based on the nomination from any Grange or Grange member. A Junior Grange Leader of the Year may not be chosen more than once in a five-year period.

Award: The Junior Grange Leader of the Year will receive a plaque at the State Grange convention. Please have all nomination forms postmarked by June 1 and send to the Washington State Junior Grange Director.

JUNIOR GRANGER OF THE YEAR

A Junior Granger of the Year will be selected annually based on their activities and qualifications. Entries must be based on one year's Junior Grange activities and community service (May 1 – April 30). Applications are available on the WA State Grange website.

Eligibility Guidelines: Application is to be submitted to the WA State Junior Grange Director postmarked by June 1. Applicants will have a in-person interview with a team member or

representative, location and time to be arranged under the director of the State Junior Grange Director. Application must include two references (with contact information). References need to be non-family members and cannot include your Junior Grange leader.

MEMBERSHIP BUILDING AWARD

Requirements: This is an award for a Junior Grange or 1+ Grange that shows a net gain of five members for the year (January 1-December 31). Awards: Cash awards for the top three entries. Certificates will be awarded to all entrants.

JUNIOR GRANGE INDIVIDUAL BUILDER

Bring in three or more new members during the calendar year (January 1-December 31) and attend 75 percent of Junior Grange activities. Award: Cash awards for top three entries. Certificates will be awarded to all entrants. Please mail forms to Washington State Junior Grange Director by June 1.

JUNIOR GRANGE FAIR BOOTH CONTEST

Use any theme. The booths should be done entirely by the junior or juniors with adult supervision only. The booth should tell a Junior Grange story or follow the fairs theme. The booth must show the name of the Junior Grange or 1+ Grange, eligible age for Junior Grange membership and local contact information. Entries are due to the State Director post marked by October 31 Cash awards to top three booths. Ribbons and certificates will be awarded to all entries.



Please refer to the National Grange Junior Grange Program Guide for information on the National Junior Grange Public Speaking Contest.

All Juniors are encouraged to participate in this public speaking contest. You may enter one time in all three categories. The speech contest will take place during State Convention. There will be a sign-up sheet in the Junior room at convention to enter. Winners at the State level will win a cash prize and be eligible to compete at the regional level.

Categories:

Impromptu- (State level only) The contestant will draw 2 topics from a mystery bag and choose one topic to give a speech on. The contestant must meet a minimum of 1 minute with no more than 3 minutes for their speech.

Short Story- The contestant may present an original short story or poem of their choosing. The contestant must meet a minimum of 1 minute with no more than 3 minutes for their story.

Prepared- Delivered an original prepared speech on one of the following topics:

- The Junior Grange Theme of the Year (See National Grange Handbook)
 - Any Topic of your choice
- The contestant must meet a minimum of 3 minutes with a maximum of 5 minutes for their prepared speech.

JUNIOR GRANGE CRAFT/ART

The crafts/displays are used to showcase your Junior Grange or 1+/Camp Craft for the past year.

All ages are as of January 1.

- Group 1: 7 years and under
- Group 2: 8-10 years
- Group 3: 11-14 years
- Group 4: Junior Grange or Junior Grange Camp
- Group 5: Special Needs

Please label each entry with: Name, birthdate, Grange name or Camp name.

Scoring:

Variety – 25 points

Quality – 25 points

Eye Appeal – 25 points

Originality – 20 points

Required Information – 5 points (if you do not have a tag, one will be provided at check in for you to complete)

Awards: Cash prizes awarded to the top three of every age group and ribbons for all entries.

Categories:

1. General Crafts – Any craft made by a Junior Granger

2. General Craft Display – Any crafts made by a Junior Grange, 1+ Junior Grange or Junior Grange Camp

3. Tri-fold JG Activity Display or Poster – May include pictures, news articles if available, brief descriptions of activities (written by the juniors that participated in the activity or



event)

4. Tri-fold Educational Display or Poster- A display on any topic for educational purposes. Displays must be completed by the Junior or Juniors only.

5. Creative Writing Contest– Use the National Grange current year Creative Writing theme (see the National Junior Grange Program Guide). Maximum of two pages, double spaced, typed or handwritten on 8 ½ x 11 paper. On the top center



of the paper, put name, birthdate, Grange name and number. Top three in each group will receive a cash prize. The first-place winner from each age group will be sent to the National Junior Grange Director to be entered in the National Grange contest.

6. Creative Art – Use this year's Agricultural Awareness theme (see National Junior Grange Program Guide). Use 8 ½ x 11 paper. May use crayons, colored pencil, markers, or paints. On the back, write name, birthdate, Grange name and number. The first-place winner from each age group will be sent to the National Junior Grange Director to be entered in the National Grange contest.



Achievement Badges

This is a new program for the Washington State Junior Department but you may recognize the badges and some categories from a program the National Junior Grange offered

several years ago. We are going to start this program with 8 badges and add to the offerings over the next few years.

Badges

Badges are available at State Headquarters or State Convention at no cost or shipped to you for the cost of postage. Please contact State Grange headquarters or the State Junior Director for the badges you need.

As leaders, you can decide where your Juniors display their badges. There are many good ideas such as sashes, vests or scrapbooks. Please keep a record of who and what badge was received. I will ask for this information at the end of the year.

Special Needs Juniors

If you have a special needs Junior, please use your best judgment and have them complete only those requirements that are obtainable, no matter the age category. If modifying or lessening requirements is necessary please do so. I want to see all of our Juniors participate at any level they are able. Should you have questions or need ideas please contact the State Junior Director.

ANIMAL CARE

Animal Care - All Juniors (Must complete all requirements in age group / exc. Special Needs)

Purpose – To give our Junior Grangers an idea of what it takes to care for an animal and a glimpse of professions that work with animals.

Requirements: (Ages 8-14)

1. Help care for an animal for at least 3 months. With the help of your parents or guardians, help feed, clean, groom, exercise and plan health care for your animal. Keep a daily or weekly care journal or chart of what you did. Share your journal or chart with your Jr Grange, Grange or adult member of your Grange.

-or-

Interview a professional who works with animals and ask them the following: Why did they choose to work with animals, what type of education does it take, what are the daily care requirements for the animals (or a animal) they work with, what type of training, interaction or exercise does the animal need, what are some common illnesses the animal could have and any other questions you may have. Present your findings to your Jr Grange, Grange or adult member of your Grange.



2. Research the animal you are caring for or one you are interested in keeping and find the following: what does it eat, where can it be found in the wild, does it have any species specific care requirements (ie heat lamp, uvb light, vitamins), should it have a cage/pasture friend, estimated cost to care for your animal per year, three things you find interesting about your animal. Make a poster or computer presentation on your findings and present this to your Jr Grange, Grange or adult member of your Grange.
3. Visit a zoo, aquarium, animal shelter or farm/ranch. Pay special attention to how animals are cared for and kept.

Requirements: (Ages 5-7)

1. Make a poster of your pet or a pet you would like to have. Include what they eat, what their house looks like, how they exercise, how you play with them and two more interesting things about your animal. Show and explain this poster to your Jr Grange, Grange or adult member of your Grange.

2. Research 2 professions that work with animals. Find the following on each profession: what type of animal do they care for, do they need a college education to do this job, could their job be dangerous, and one other interesting fact about this profession. Tell your findings to your Jr Grange, Grange or adult member of your Grange.
3. Visit a zoo, aquarium, animal shelter or farm/ranch. Pay special attention to how animals are cared for and kept.

DEAF AWARENESS

Deaf Awareness - All Juniors (Must complete all requirements in age group / exc. Special Needs)

Purpose - To understand deafness and hard-of-hearing and the aids used to help with communication.

Requirements – (Ages 8-14)

1. Learn to fingerspell and read back the alphabet using American Sign Language and demonstrate your new talent to your Jr Grange, Grange or adult member of your Grange.
2. Research ways that hearing can be lost and ways to protect your hearing. Identify activities that you are doing that may be damaging your hearing and make a change to protect your hearing. Describe your findings and explain your changes to your Jr Grange, Grange or adult member of your Grange.
3. Learn what it is like to be deaf or hard-of-hearing. Wear earplugs, unplugged headphones or turn the sound down very low while watching a movie or tv show. For the first 15 minutes try to figure out what is going on without sound. Then turn on subtitles and see if your understanding improves. This is a great demonstration of a deaf or hard-of-hearing tool at work.
4. Learn about 3 other tools used by deaf or hard-of-hearing people. Describe your findings to your Jr

Grange, Grange or adult member of your Grange.

Requirements – (Ages 5-7)

1. Learn to sign and read back the numbers 1-10 and letter sign your first name using American Sign Language and demonstrate your new talent to your Jr Grange, Grange or adult member of your Grange.
2. Learn 2 ways hearing can be lost and 2 ways hearing can be protected. Identify activities that you are doing that may be damaging your hearing and make a change to protect your hearing. Describe your findings and explain your changes to your Jr Grange, Grange or adult member of your Grange.
3. Learn what it is like to be deaf or hard-of-hearing. Wear earplugs, unplugged headphones or turn the sound down very low while watching 10-15 minutes of a movie or tv show. Tell your Jr Grange, Grange or adult member of your Grange the following: what it was like to experience this, did you know what was going on in your show, what would it feel like to be deaf or hard of hearing?
4. Learn about 2 other tools used by deaf or hard-of-hearing people. Describe your findings to your Jr Grange, Grange or adult member of your Grange.

GOOD GRANGER

Good Granger - All Juniors (Must complete all requirements in age group / exc. Special Needs)

Purpose – To promote attendance, appropriate conduct and helpfulness to others both inside and outside the Grange.

Requirements – (11-14)

1. Attend at least 80% of your Jr Grange or Grange meetings in a 6 month period and attend 1 entire Subordinate meeting. Use proper manners at all times and listen to what is going on. Ask an adult at the

meeting if you are unsure of what manners are expected or have questions about the meeting.

2. For at least 2 meetings arrive in time to help set up and stay to help clean up the meeting hall, dining hall or kitchen.

3. Make a poster or presentation on manners that should be used when in a meeting or while you are representing the Grange. Present your ideas to your Jr Grange, Grange or adult member of your Grange.

Requirements – (5-10)

1. Attend at least 80% of your Jr Grange or Grange meetings in a 6 month period and attend at least the opening and closing of a Subordinate meeting. Use proper manners at all times and listen to what is going on. Ask an adult at the meeting if you are unsure of what manners are expected or have questions about the meeting.

2. For at least 2 meetings arrive in time to help set up and stay to help clean up the meeting hall, dining hall or kitchen.

3. Make a poster or presentation on manners that should be used when in a meeting or while you are representing the Grange. Present your ideas to your Jr Grange, Grange or adult member of your Grange.

CRAFTS

Crafts - All Juniors (Must complete all requirements in age group / exc. Special Needs)

Purpose - To encourage creativity.

Requirements – (All Ages)

1. Create crafts using 3 different mediums (fabric, wood, clay, paper, etc.). Show and explain your crafts to your Jr Grange, Grange or adult member of your Grange.



2. Enter at least one of your crafts in a local fair or at a Grange competition.

3. Learn about a traditional craft from another country. You could read a book or article, watch a tv show or movie or talk with someone who creates this craft. Describe your findings to your Jr Grange, Grange or adult member of your Grange.

U.S. HISTORY

U.S. History - All Juniors (Must complete all requirements in age group / exc. Special Needs)

Purpose – To foster a greater understanding and appreciation of the history of our country, state and community.

Requirements – (10-14)

1. Country- Find the following:

- Find two important U.S. historical figures who lived in the 1700 or 1800's.
- Why was she/he important?
- Find 2 important U.S. events that happened in the 1800's. Why are they important?
- Find one place East of the Mississippi River and one place West of the Mississippi River of historic importance. Why are they important?

Present your findings to your Jr Grange, Grange or adult member of your Grange.

2. State- Draw a map of Washington. Include all major cities, rivers, Interstates, mountain ranges and anything else you would like. Also, include the date our state was added to the Union, the state bird, motto, tree and stone. Share your drawing with your Jr Grange, Grange or adult member of your Grange.

3. Local- Visit a place of historic importance in your local area. Describe where you went and what you learned to your Jr Grange, Grange or adult member of your Grange.

Requirements – (5-9)

1. Country- Read a book or watch a movie/show on an important U.S. Historical Figure Living in the 1700 or 1800's. Report to your Jr Grange, Grange or adult member of your Grange who you learned about, when they lived, where they lived and why they are important to U.S. history.

2. State- Draw a map of the State of Washington. Include 5 major cities, the city you live in, mountain ranges and major rivers. Also include the year Washington became a state and the state motto. Share your drawing with your Jr Grange, Grange or adult member of your Grange.

3. Local- Visit a place of historic importance in your local area. Describe where you went and what you learned to your Jr Grange, Grange or adult member of your Grange.

FIRST AID

First Aid - All Juniors (Must complete all requirements in age group / exc. Special Needs)

Purpose – To gain knowledge of basic first aid.

Requirements – (11-14)

1. Learn how to properly care for or identify the following:

- When to call 911
- Care for a scrape or cut
- Care for a burn
- Identify and report choking
- Identify and report a stroke or heart attack

2. Learn what is required in a basic first aid kit and what each item is used for.

3. Teach someone how to properly care for or identify one item from requirement 1.

Requirements – (5-10)

1. Learn how to properly care for or identify the following:

- When to and how to call 911
- Care for a cut or scrape

- c. Identify and Report Choking
2. Learn what is needed in a basic first aid kit and how/what each item is used.
3. Teach an adult how to properly care or identify one item from requirement 1.

JUNIOR GRANGE KNOWLEDGE

Jr Grange Knowledge - All Juniors (Must complete all requirements in age group / exc. Special Needs)

Purpose – To increase the knowledge of Junior Grange Ritual.

Requirements – (9-14)

1. Learn and recite the Jr Grange Pledge to your Jr Grange, Grange or adult member of your Grange using proper hand positions.
2. Learn all of the officers and their position in a meeting hall setup.
3. Demonstrate how to properly hold a Jr. Grange rod (stave) to your Jr Grange, Grange or adult member of your Grange.
4. Explain and demonstrate the use of a gavel to your Jr Grange, Grange or adult member of your Grange.

Requirements – (5-8)

1. Learn and recite the Jr Grange Pledge to your Jr Grange, Grange or adult member of your Grange using proper hand positions.
2. Demonstrate how to properly hold a Jr. Grange rod (stave) to your Jr Grange, Grange or adult member of your Grange.
3. Explain and demonstrate the use of a gavel to your Jr Grange, Grange or adult member of your Grange.

GRANGE HISTORY

Grange History - All Juniors (Must complete all requirements in age group / exc. Special Needs)

Purpose – To increase the knowledge of Grange History.

Requirements – (9-14)

1. In an essay, poster or



presentation, answer the following questions and present it to your Jr Grange, Grange or adult member of your Grange:

- a. Name the founders of the Grange and explain why the Grange was organized.
- b. What does the word Grange mean? What is the Grange officers and hall set up reminiscent of?
- c. What Year was the Grange founded and where was the first Grange organized?
- d. When was the Junior/Juvenile Grange founded?
- e. Name two things about Grange history that is unique?

2. Interview a long-time member of the Grange. Ask them when they became a member, what they like most about the Grange, a favorite memory of the Grange, why they

think the Grange is important, and anything else you would like.

Requirements – (5-8)

1. Create a drawing that includes the following:

- a. The Grange or JR Grange emblem
- b. The date the Grange or JR Grange was Founded
- c. Oliver Hudson Kelly
- d. One other item that reminds you of the Grange

2. Interview a long-time member of the Grange. Ask them when they became a member, what they like most about the Grange, why they think the Grange is important, and anything else you would like.

ADDITIONAL INFORMATION

The Junior Grange Guidebook is available online for download on the National Grange website. The Guidebook will assist you in understanding the steps and administration of forming and chartering a Junior Grange. The 1+ Junior Grange program is also included. The Guidebook contains the procedures and forms you will need to start your Junior Grange Program within your community. Each Community Grange is unique within its own area and so is your Junior Grange program.



YOUTH DEPARTMENT

State Youth Director

Jerry Gwin
P.O. Box 14
Humptulips, WA 98552
(360) 987-2546
Email: davona1242@outlook.com



STATE YOUTH TEAM:

Rick & Terry Ferguson
123 Gallaher Road
Waitsburg, WA 99361
509-337-6207
rickandterryf@hotmail.com

Leah Bardal
4506 Pleasant Hill Road
Kelso, WA 98626
360-577-8170
Leah.bardal@hotmail.com

Davona Gwin
121 Walker Road
Hoquiam, WA 98550
360-987-2546
Davona1242@outlook.com

Jonathan & Brittney Pittman
20547 Road 5.5 SE
Warden, WA 98857
Jonnybegood349@yahoo.com

Morgan Browning
139 Del Ray Road
Mossyrock, WA 98564
Morgangrace3@hotmail.com

WEBSITES

WA State Grange Youth Department – includes applications for all state Grange

youth programs: www.wa-grange.com

National Grange Youth Department – 2024 Grange Youth Program and Contest Handbook includes applications for all national grange programs: www.nationalgrangeyouth.org

Facebook Group: Washington State Grange Youth

YOUTH DEPARTMENT CALENDAR FOR 2024

February 5-6: State Grange Junior/Youth Legislative Experience in Olympia

April 26-28: Western Regional Grange Leadership/Youth Conference – hosted by the Washington State Grange in Yakima

June 1: Notify State Youth Director of intent to enter the following:

- Horizon Youth Ambassador and Young Patron Program
- Outstanding Young Adult
- Sign-a-Song Contest
- Public Speaking Contest – prepared speeches
- *Spirit of Youth Award
- *Youth Community Service Award
- *Junior Mentor Award

June 26-30: State Grange Convention @ Northeast Washington Fairgrounds in Colville. Bring items for the Keep Washington Warm Service Project and Grange Youth Display Contest Entries

August 1: All applications for the following due to the State Youth Director:

•John Trimble Legislative Experience

•National Grange Youth Officer Team

August 15: Applications due to National Youth Director for the following:

•Distinguished Grange Youth Program

•Horizon Youth Leadership Ambassador

•National Grange Youth Officer Team

•John Tribble Legislative Experience

•GRANGE Youth Pillar Project

November 12-16: National Grange Convention in Bettendorf, Iowa

MISSION STATEMENT FOR THE YOUTH DEPARTMENT

The Youth Department exists to serve the interests of young Grange members and foster their role in the future of the Grange.

STATE GRANGE YOUTH OFFICERS

The Washington State Grange Youth Officers are elected at State Convention with installation to follow. To be eligible to be a State Youth Officer, you must be a fourth-degree member in good standing. Each person can hold any given office for only one year. There is a limit of three officers per county, if possible, to give everyone a chance to become an officer. State Youth Officers' duties consist of opening, conducting business, and closing Youth meetings at convention; helping with the planning and running of Youth Weekend; and attending their own Subordinate and Pomona meetings as well as

others in their area. They will be called on to speak to other groups about the Grange and represent the Grange at other functions and meetings. You are representatives of the Grange and the Youth Department!!!

STATE CONVENTION

The youth activities during convention are open to all fourth-degree members in good standing.

The Youth Department of the Washington State Grange will not be responsible for youth not in attendance of youth functions, or in the evenings after all youth activities are over for the day. Each youth under the age of 18 must have a responsibility form on file with the Washington State Grange. The person signing the responsibility form must be over the age of 21 and staying for the entire convention.

The responsibility form requires the name and convention address of the person responsible for the youth attending the convention. Any youth attending convention and participating in youth activities must be registered and wear the registration badge to all functions. Each youth will need a completed medical release form to register. The youth badge is required to attend all youth activities.

DRESS GUIDELINES: Everyone will be dressed neatly (clean, no holes, tears or unsightly patches). We suggest at least one dress shirt (tie recommended) and slacks for men and at least one dressy outfit

for women. Appropriate casual dress will be fine most of the time.

KEEP WASHINGTON WARM YOUTH SERVICE PROJECT



In cooperation with the State Grange Community Service Department, our Grange youth members will be collecting stocking caps, mittens, gloves, scarves, etc. for distribution to the less fortunate in our state. Items may be purchased or hand made. Donations should be delivered to the State Grange Convention. Grange youth will display the items and then distribute the items in the host convention area following the convention.

HORIZON LEADERSHIP YOUTH AMBASSADOR and YOUNG PATRON PROGRAM

The purpose of the Horizon Leadership Ambassador/Young Patron program is to provide an opportunity for Youth and Young Adults, ages 16-25, to be selected to represent our state at the National Grange convention, to build their leadership potential; broaden their view of the Grange by experiencing a National Convention; receive educational training to use in their own states; and build relationships with Grangers throughout the nation by having fun.

The Washington State Grange Youth Department will reimburse for the cost of airfare to the national convention site. Details

for eligibility and selection process can be found in the National Grange Youth Program Guide and the WA State Grange Youth Program Guide.

WASHINGTON STATE SPIRIT OF YOUTH AWARD

This award is designed to honor those who have given unselfishly of themselves to Youth Programs. Often these people are behind the scenes, never receiving recognition, but always have the needs of Youth in their plans. The Spirit of Youth Award is an award of distinction, an honor of prestige.

Rules: Nominees can be single or married. Nominees can be of any age. Nominations should take the form of a letter to the Youth Director explaining why this person/couple should be recognized for this award. Nominations are due to the State Youth Director postmarked by May 15th. The award will be given during State Convention.

JOHN TRIMBLE YOUTH LEGISLATIVE EXPERIENCE

National Convention Youth Legislative Experience will provide opportunities for one or two Grange Youth, age 16-25, with an interest in the legislative aspect of the National Grange to see the inner workings of committees and the grass roots legislative policy development effort at the National Grange Convention. Details for eligibility and selection process can be found in the National Grange Youth Program Guide.

NATIONAL GRANGE YOUTH OFFICER TEAM/COUNCIL

Purpose: To assemble a team of Youth from across the nation to open the National Grange convention on Friday morning at the annual session. This will provide more youth with an opportunity to participate in the National Grange convention. Details for eligibility and selection process can be found in the National Grange Youth Program Guide.

PUBLIC SPEAKING CONTEST



There will be three categories this year along with three age divisions are as follows:

- 14-20 years of age
- 21-25 years of age
- 26+ years of age

The age of the contestant as of January 1 will determine the age group.

Category A: Prepared speech

Contestant's choice of topic. Contestants in Category A will be required to answer an impromptu question at the end of their speech. The questions will be related to the contestant's chosen speech topic. Speeches must be a minimum of 3 minutes and a maximum of 5 minutes.

Category B: Impromptu Speeches

An impromptu speech is delivered without preparation or thought ahead of time. No note cards are

used, and topics are generally drawn. We hope that by establishing an impromptu speech category that members will build confidence and participate in the prepared speeches or the Grange commercial speech category.

Impromptu speeches should be at least one minute in length and not longer than 5 minutes. The timekeeper will hold up hand when the 1-minute mark has been reached and the 4½ minute mark has been reached so speaker knows when he/she can stop.

Participants will draw two topics, select their choice of the two and return the other one. Competition will be held at the Regional Conferences – You need not have participated in a state competition to participate. Participants must notify National Director of intent to enter prior to the beginning of the contest.

Public speaking will be judged on the following criteria:

- Text – content, composition, and topic.
- Delivery – voice, command of audience, stage presence, expression, mannerisms, and gestures.
- Impromptu Answer – response.
- Other – Time limit, speech outline. Etc.

One point will be deducted for every 30 seconds a participant is under or over the time established. Score sheet will be returned to entrants.

WA STATE GRANGE CONTEST INFORMATION: Participants in Category A (Prepared Speeches)

should notify the State Youth Director by June 1 of their intent to enter the contest. Participants in Category B should notify the State Youth Director prior to the contest at the State Convention. The state contests will be held during the State Grange Convention in June of each year. One Best of Show winner in Category A (Prepared Speeches) will be selected to represent our state at the National Grange Convention in November.

Prizes: State prizes in each age group of Category A (Prepared Speech) are: First Place, \$100; Second Place, \$75; and Third Place, \$50. State prizes in each age group of Category B (Impromptu) are: First Place, \$15; Second Place, \$10; and Third Place, \$5.



SIGN-A-SONG CONTEST

Categories:

A. Individual – either a novice or hobbyist. An individual who is beginning to learn to sign or signs on an occasional basis and strictly for fun.

B. Group – two or more people signing.

Rules

1. Each state may select a Best of Show winner to represent their state at the National Grange Convention.

2. Participants are to supply the contest officials with three copies of the lyrics to their song.
3. Participants must provide their own music. National contestants must provide music to the National Grange Youth Director by November 1.
4. Anyone who is a professional instructor or receives money for signing is ineligible to compete in this contest.
5. Signers must use total communication techniques: sign language, facial expressions, mouthing of words for lip reading, finger spelling if appropriate, and body movement.
6. Participants must be Grange members.
7. Props and costumes are permitted, rhythm is optional.
8. Only one song may be signed during the competition performance.
9. Participants must sign their own name and song title.
10. Participants must inform the audience and judges what type of sign language they will be using. (Pidgeon, ASL, ESL, etc.)

Judging guidelines for a total of 100 points:

- Utilization of Total communication skills (sign language ability, signs clearly with correct interpretation) - 32 points
- Body expression, displays emotion, expresses key thoughts with body movement, mouth words for lip reading -30 points
- Presentation, interpret with confidence, uniformity (group) - 25 points
- Song selection is appropriate, with a clear meaning and is suitable for the participants signing ability - 10 points

- Signed their own name - 1 point
- Signed title of Song - 1 point
- Informed judges and Audience of type of sign language being used - 1 point

WA STATE GRANGE CONTEST INFORMATION:

Participants should notify the State Youth Director by June 1 of their intent to enter the contest. The state contests will be held during the State Grange Convention in June of each year. One Best of Show winner will be selected to represent our state at the National Grange Convention in November. State prizes in Category A: First Place, \$50; Second Place, \$30; and Third Place, \$20. State prizes in Category B: First Place, \$75; Second Place, \$50; and Third Place, \$25.

COMMUNITY SERVICE AWARD

This award is given in memory of Wib and June Justi, past National Grange Youth Directors. This award is intended to encourage youth and young adults to interact and serve the communities where they reside. Full details can be found in the National Grange Youth Program Guide.

JUNIOR MENTOR AWARD

Grange youth and young adults can have a powerful impact on the Grange experience with our youngest members. This award is designed to recognize the Grange youth and young adults that go above and beyond to guide and mentor Junior Grangers. Full details can be found in the National Grange Youth Program Guide.

GRANGE YOUTH DISPLAY CONTEST

All entrants must be youth or young adult members of a subordinate/community Grange. There will be two age division: Youth – Grange members 14-21 years of age as of January 1; Young Adults – Grange members 22-35 years of age. Full details can be found in the National Grange Youth Program Guide.

WA State Info: All entries are due to the youth meeting room at the State Grange Convention before the opening of the convention. If no entries are received at the convention, the State Youth Committee reserves the right to select state representative entries following the state convention.

GRANGE YOUTH PILLAR PROJECT

An individual or group, up to three youth/young adults, are challenged to put together an event or project within their subordinate, Pomona or State Grange that aligns with one of the six pillars of GRANGE Youth and track that project throughout the events time frame. The event or project must take place between October 1 and September 20. Once the event or project concludes, youth will put together a project portfolio to show their beginning, during, and end progress. Complete details are available in the National Grange Youth Program Guide.

The Six Pillars of GRANGE Youth are: Growth, Ritual, Action, Networking, Grassroots Advocacy, and Education.

GRANGE BASEBALL

Grange Baseball is an exciting event that brings together youth and young adults interested in Grange trivia and history. Individuals will gain knowledge about the Grange, its history and impact on rural America. This fact sheet serves as a guideline to prepare Grangers for a Grange Baseball competition. Details for eligibility and selection process can be found in the National Grange Youth Program Guide.

PARLIAMENTARY PROCEDURE CONTEST



The purpose of this contest is to encourage Grange youth and young adults to learn to effectively participate in a business meeting and to assist in the development of their leadership, public speaking, and problem-solving skills. Full details can be found in the National Grange Youth Program Guide.

G.R.O.W. CLUB

“Go Right On Working”

The G.R.O.W. Club is an elite club that is made up of Grange members who have participated in the National Grange Prince, Princess, Young Couple, Ambassador or Horizon Leadership programs or have served as Youth team members or as a National Grange Youth Director. State Grange GROW Club members will meet annually during the State Grange Convention.

DISTINGUISHED GRANGE YOUTH PROGRAM

The Distinguished Youth Program, similar to the National Grange Distinguished Grange Awards Program, was established to encourage our state youth directors to get their youth/young adults to participate in all the programs available to our members as appear in this guide. By being named a Distinguished Youth Program shows your commitment to the youth of our Order, their leadership training, skill enhancement, participation in Grange activities and much more. Only through a strong Grange Youth program can we ensure the vibrant future of our organization.

The Distinguished Youth Program Awards will be presented annually at National Grange Convention and will seek to honor Youth Programs for their work from July 1, 2023 through June 30, 2024. All Distinguished Youth Granges will receive a certificate and be recognized in the annual honors list. Applications are due to the National Grange Youth Director by September 1.



ADDITIONAL NATIONAL GRANGE YOUTH PROGRAMS

Please refer to the National Grange Youth Program Guide for information on the following programs:

- Youth Advocacy Project
- Grassroots Activism Scholarship
- Youth Officer T-Shirt Design Contest
- GROW Club Travel Scholarships
- GROW Club Academic Scholarship



FAMILY LIVING

Family Living Director

Helen Berg

1482 Road 20 NW

Soap Lake, WA 98851

360-353-8043

chuckhelenberg@hotmail.com

Family Living Team Members

Vicky Loomer (James)

(360) 563-1202

jvloomer@msn.com

Vicki Gilmour

(360)263-3509

vickig@tds.net

Florence Ogden (Butch)

(360) 741-4787

ogdenf53@gmail.com

Dianne Cook

(509) 679-0270

Dcook6267@nwi.net

MISSION STATEMENT

The charge for installation of the Chairman of Family Living at all levels states, in part, *"Just as the home is the center of family living, so should the Grange be the center of rural community life. Your effort should be directed toward making your meeting place truly a Grange home, radiating friendliness and hospitality to all who come within its doors. Every time the door of the Grange Hall is opened, and guests received, the Family Living Department is involved and the way your Grange is perceived is established. You perform a very important function for your Grange."*

The Chairman of Family Living also is given the duty of carrying out the Family Living programs, educational resources and projects established by the WA State Grange and the Family Living Team in order to increase awareness and participation across the state.

DUTIES OF THE SUBORDINATE GRANGE FAMILY LIVING CHAIR

- Cooperate with State Director & Pomona Chairman.
- Attend a Family Living Conference in your Pomona or District.
- Hold a committee meeting early to plan the year's activities. Set a time schedule and appoint assistants.
- Keep your Grange informed concerning Family Living activities by reporting at each meeting. Lead the members of your Grange in any activity helpful to your Grange and community. Keep Grange hall attractive, comfortable, and as efficiently equipped as possible.
- Cooperate with Lecturer in furnishing at least one program.
- Contribute to Grange sponsored Health & Charity projects.
- Assist Youth & Junior Grange members.
- Be the Hostess of your Grange, especially in welcoming guests & new members.
- Make a permanent Grange Family Living Notebook for reports, records, and activities.
- Send reports promptly to the State Director at time specified.
- Deliver all materials to the new Chairman of Family Living at the end of your term of office, including the permanent Grange Family Living Notebook.

DUTIES OF THE POMONA GRANGE FAMILY LIVING CHAIR

- Plan a program of work for your Subordinate Granges, incorporating the State Family Living Department.
- Hold regular conferences for all Subordinate CFL's in your Pomona to include informational

programs and exchange ideas.

- Visit each Grange within your Pomona at least once a year.
- Report at each Pomona Meeting on work planned and accomplished.
- Encourage Subordinate Reports at appropriate times.
- Submit your Year End Report & Pomona Contest Report promptly to your State Director at appropriate time.
- Arrange for Pomona Contests: planning meeting, location, judging, notifying Subordinate Chairs well in advance.
- Make a permanent Pomona Family Living Notebook for all reports, records, and activities.
- Deliver all Pomona CFL materials to incoming CLF chair at the end of your term of office including notebook.

2024



FAMILY LIVING CALENDAR OF EVENTS

January

- January 1 – Family living Year End Reports due to State Director.
- Do you have your location set for your Pomona Contests yet?

February

Happy Valentines Day

March

- Family Living Pomona Contests happening around the state.
- March 31 – Yearly Donations to various Family Living Sponsored charities suggested submission date.

April

- Grange Month activities across the state.
- April 1 – Family Living Scholarship Applications due to State Headquarters.

- Family Living Contests being held. Look for one in your County.

May

- May 10 – Pomona Contests completion date.
- May 20 – Pomona Contest Reports due to state Director.

June

- Washington State Grange Convention.

July/ August - It's fair time

September

- Booster nights happening across the state.

October

- Happy Fall.

November

Happy Thanksgiving!

- Local food banks are busy this time of year, perhaps a volunteer group of Grangers would lighten the load.

- Election of Family Living Chairs in Subordinate & Pomona Granges.

- Remember our Veterans.

December

- Merry Christmas!
- Holiday Bazaars, Open houses, Christmas programs.

CHARITIES

The Family Living Department supports four charities through your generous donations. These charities include:

- The Family Living Scholarship Fund
- Jr. Grange Camp Scholarship Fund
- King Memorial
- In addition, we encourage you to give to any charity in your local area who could use some help. This may be a fire dept.,

food bank, homeless or women's shelter just to name a few.

Information on these charities can be found in your information packet.

PROGRAMS THAT MAKE A DIFFERENCE

- Care Cloths
- Project Linus
- Preemies Blankets, Hats, & Booties
- Used Eyeglasses
- Quilts for the Brave /Quilts of Valor
- Hugs in a Quilt
- Hugs in a Mug
- Comfort Toys
- Adult Bibs
- Lap Robes
- Chemo Caps

All project information is in the packet this year. Ask your Family Living person for more information.

STATE FAMILY LIVING CONTEST RULES

Division J-1 – Juniors ages 8 and under

Division J-2--Juniors ages 9 to 13

Division Y – Youth ages 14 to 18

Division A – Adults ages 19 and older

Judging: Entries are judged by the Danish system. The first, second, or third place winners at the state level will be picked from the blue-ribbon winners.

Awards: State Awards in each Class include first, second, and third place rosettes, along with cash awards in each group as follows:

Division J:

- Best of Show \$15.00
- Second Best of Show \$10.00

Division Y:

- Best of Show \$25.00
- Second Best of Show \$15.00

Division A:

- Best of Show \$50.00
- Second Best of Show \$25.00

Grange members and non-Grange members may enter all contests.

GROUP 1 - BAKING

Thank you to the Washington Association of Wheat Growers for sponsoring our Baking Contest.



Washington Association of Wheat Growers Award: The Washington Association of Wheat Growers Award and Rosette and Cookbook will be awarded to the first place winner. Second Place will be awarded a cookbook. First place Youth will be awarded a Wheat Magic Recipe Book and a Ribbon. First place Junior will be awarded a Wheat Magic Recipe Book.

Each entry must be accompanied by one copy of the recipe placed in a legal sized envelope. Tape the envelope to the entry. Best of Show winner may not be entered in the same class for four years after winning,

REMEMBER: All entries must be in a disposable container or on a disposable base and wrapped in clear plastic.

All entries must be made from scratch. All bread must be a standard sized loaf.

All cookies, muffins, biscuits, and rolls must have 4 pieces.
Youth and Juniors may not have alcohol in their baking entries.

Class A – Breads and Rolls

Lot 1 – Yeast Breads & Rolls

Lot 2 – Sweet Yeast Pastries

Lot 3– a Quick Breads, May be a small loaf

b- Muffins (4)

c-Biscuits(4)

Lot 4 – Diabetic Quick Breads

Lot 5 – Gluten Free Bread & Rolls

Lot 6—Sour Dough

Lot 7--Other

Class B – Desserts

Lot 1– Frosted Layer or Sheet Cake
From scratch

Lot 2– Bundt Cake From Scratch

Lot 3 – Frosted Cupcakes – Entry must include 4 cupcakes
From Scratch

Lot 4 – Decorated Cakes & Cupcakes - may be done on a form

- 4-1– Cake
- 4-2– Cupcakes

Lot 5 – Fruit Pies – 8” or 9” in a disposable pan

Lot 6--Other

Lot 7 –Cookies-- 4 Cookies required

- 7-1 – Baked
- 7-2 – Non-baked
- 7-3 – Diabetic
- 7-4 – Gluten Free
- 7-5– Decorated Cookies
- 7-6--Other

Lot 8 – Bars – Entries must be cut.

- 8-1 – Brownies – May be entered uncut
- 8-2 – Diabetic
- 8-3 – Gluten Free
- 8-4 – Other
- Lot I—Sour Dough

Junior Baking Class A

Lot 1 Quick Bread May be a small loaf

Lot 2 Muffins (4) May be from a mix

Lot 3 Biscuits (4) May be from a mix

Junior Baking: Class B

Lot 1—Cake mix cake

Lot 2—Frosted Cupcakes (4) May be from a mix

Lot 3- Cookies

3-1 Baked

3-2 Non-baked

3-3 Cake-mix cookies

3-4 Decorated Cookies

3-5-Other

Lot 4 Bars

4-1 Brownies (4) May be from a mix

4-2 Other

GROUP 2 – CANDY

All entries must be made from scratch. No entries with uncooked eggs will be accepted. All entries must have 13 pieces. Youth and Juniors may not have alcohol in their candy entries.

Class A – Cooked

Class B – Uncooked

Class C – Decorated

GROUP 3 – FOOD PRESERVATION

All canning entries must be prepared using USDA/ Extension service information.



Juniors under aged 8 may not enter products processed in a pressure canner. Parents shall use discretion when Juniors are using a hot water bath canner.

More than one item per class may be entered on the Pomona level.

(i.e. peaches and pears and applesauce.)

All entries must be clearly labeled on the product to include:

- Item Name
- Processing Date – Month, Day, & Year
- Processing Method
- Processing Time
- Pounds of Pressure – if pressure- canned
- Altitude of Processing Location
- Hot Packed or Cold Packed
- Boiling Water or Pressure Canned

Approved standard canning jars must be used. New canning lids must be used. Lids must be approved for processing and shelf storage. No temporary storage plastic lids allowed. Rings are to be included on jars but must be able to be removed for judging.

Class A – Fruits

Class B – Vegetables

Class C – Jams, Jellies, & Preserves

Class D – Meat

Class E – Tomato Products Please include recipe or source.

Class F – Salsas - must indicate type and amount of citric acid added. Please include recipe or source.

Class G – Pickles & Relishes Please include recipe or source.

Class H– Vinegars

Class I– Juices

Class J – Pie Fillings

Class K – Soups

Class L-Syrups

Class M- Other

Class N – Dried Products – In a small jar or resealable bag. Please include method of dehydration.

- Lot 1 – Vegetables – 1/3 Cup
- Lot 2 – Fruits – 1/3 Cup
- Lot 3 – Soup Mixes – 1/3 Cup

- Lot 4 – Herbs – 1/3 Cup
- Lot 5 – Fruit Leather – 6” or more by 1 ½” wide
- Lot 6 – Jerky – 6” or more by 1 ½” wide
- Lot 7 – Other

GROUP 4 - NEEDLEWORK

Class A – Large Item for the House

- Lot 1 – Crochet
- Lot 2 – Knit
- Lot 3 – Tat

Class B – Small Item for House

- Lot 1 – Crochet
- Lot 2 – Knit
- Lot 3 – Tat

Class C – Item to Wear

- Lot 1 – Crochet
- Lot 2 – Knit
- Lot 3 – Tat

Class D – Afghan

- Lot 1 – Crochet
- Lot 2 – Knit

Class E – Baby Afghan or Lap Robe

- Lot 1 – Crochet



- Lot 2 – Knit

Class F – 3-Piece Baby Outfit

- Lot 1 – Crochet
- Lot 2 – Knit

Class G – Cross-Stitch, Embroidery,

- Lot 1 – Hand Embroidery
- Lot 2 – Counted Cross-Stitch Must have back showing.
- Lot 3 – Needlepoint
- Lot 4 – Machine Embroidery
- Lot 5 – Ribbon Embroidery
- Lot 6 – Plastic canvas
- Lot 7- Other

GROUP 5 – SEWING

May enter more than one item per Class at the Pomona level.

Class A – Adult Clothing

Class B – Children’s Clothing

Class C – Coat or Jacket

- Lot 1 – Lined
- Lot 2 – Unlined

Class D – Lingerie

- Lot 1 – Pajamas
- Lot 2 – Nightgown
- Lot 3 – Robe
- Lot 4 – Slips, Bras, Panties

Class E – Household Item

- Lot 1 – Large
- Lot 2 – Medium
- Lot 3 – Small

Class F – Apron

Class G – Costume

Class H – Other

GROUP 6 – QUILTS

Class A – Traditional Quilts – Quilts made with repeating blocks and Machine quilted

- Lot 1 – Large Quilt – 90” minimum
- Lot 2-Medium Quilt Queen/Standard
- Lot 3 Small Quilt Twin
- Lot 4–Lap Quilt
- Lot 5 – Baby Quilt
- Lot 6 – Wall Hanging – Any Size
- Lot 7 – Small Quilted Item
- Lot 8 – Other



Class B – Non-Traditional Quilts – Bargello, Sampler, Line, Paper Piecing, Applique, Landscape, or the like and Machine Quilted.

- Lot 1 – Large Quilt – 90” minimum
- Lot 2 –Medium Quilt Queen/Standard
- Lot 3 – Small Quilt Twin
- Lot 4 –Lap Quilt

- Lot 5–Baby Quilt
- Lot 6 – Wall Hanging – Any Size
- Lot 7– Small Quilted Item
- Lot 8 – Other

Class C – Quilts – Hand Quilted

- Lot 1 – Large – 90” minimum
- Lot 2 – Medium Queen/Standard
- Lot 3- Small Twin
- Lot 4 – Wall Hanging – Any Size
- Lot 5 – Baby or Lap
- Lot 6 – Other

Class D – Comforters – Tied

- Lot 1 – Large – 90” minimum
- Lot 2 –Medium Queen/Standard
- Lot 3- Small Twin
- Lot 4 – Wall Hanging – Any Size
- Lot 5 – Baby or Lap
- Lot 6 – Other

Class E- Quilt made by an organization

GROUP 7 – COMFORT TOYS

Grange members and non-members may enter. Toys must be soft sculpture, filled with a commercial fiberfill, and measure not smaller than 6” and not to exceed 24”. Entries must conform to U.S. Safety Regulations with no sharp edges that might injure a child. Trimmings must be secure with no buttons or glue-on eyes.

There is no limit on the number of entries per person allowed for judging. All judging will take place at the State level. Toys are judged on cleanliness, safety, general appearance, and workmanship. All toys become the property of the Washington State Grange and non will be returned to the contestant. Awards will be given at the State level as follows:

Division J:

- Best of Show \$10.00
- Second Best of Show \$5.00

Division Y:

- Best of Show \$15.00
- Second Best of Show \$10.00

Division A:

- Best of Show \$25.00
- Second Best of Show \$15.00

**GROUP 8 – STATE QUILT
BLOCK**

Each block must measure 12 1/2 inches square unfinished. All judging will take place at the State level. Quilt blocks are judged on cleanliness, general appearance, and compliance to size requirements and theme. Grange members and non-members may enter. All quilt blocks become the property of the Washington State Grange and none will be returned to the contestant.

The State Quilt Block Contest will be awarding first, second, and third place rosettes for each class along with Best of Show and Second Best of Show for Adult & Youth divisions
Youth Division – Ages 15 and under

- Best of Show \$15.00
 - Second Best of Show \$10.00
- Adult Division – Ages 16 and over
- Best of Show \$25.00
 - Second Best of Show \$15.00

This year we will be using the block Jacob's Ladder. Any colors are fine for the ladder part with white for the other two corners. I think this will make a striking quilt.

**NATIONAL GRANGE
QUILT BLOCK CONTEST**

STATEMENT OF INTENT: The Quilt Block Contest provides an opportunity for Grange members and friends to collaborate in creating quilted items that can be donated or auctioned for funds to provide additional services to community members in a nationwide effort

RULES:

A. The National Grange Quilt Block Contest is open to everyone – Grange members and members-to-be.

B. All contest entries must be received by the National Grange Lecturer by September 1, 2024. Send entries to: Tom Gwin, National Lecturer, PO Box 1186, Olympia WA 98507

C. Any entries received after the deadline will not be judged. However, all entries received will be exhibited at the 158th National Grange convention in Bettendorf, Iowa.

D. The quilt block you enter in the contest for judging must be made by you.

E. There is no limit on the number of quilt blocks a person may submit, but you must choose one quilt block per person to be judged.

F. All entries will be retained by the National Grange to be made into finished quilts and other items to be sold at a later date.

G. A 2024 Quilt Block Contest Entry Form must be completed for the block to be judged.

GROUPS

- Group I – Adult (Age 14+) •
- Group II – Junior (Age 13 and under)

PRIZES:

- Monetary prizes will be awarded for 1st (\$50), 2nd (\$30), and 3rd (\$20) place in each Group. • Ribbons will be awarded to all entrants. Any questions? Contact Tom at lecturer@nationalgrange.org

Split Back Star Block

This pattern was the 2023 Quilts of Valor official block.

The pattern and specific instructions are found in the 2024 National Grange Contest Guide.



ADDITIONAL NATIONAL GRANGE CONTESTS & RECOGNITION

The National Grange offers a wide range of other Grange contests. Details on these contests can be found in the National Grange Contest Guide.

These contests include the following:



Communications Department:

- *Publicity Item Contest
- *National Grange Tik Tok/Reels Challenge

Legislative Department:



- *Grassroots Advocacy in Action Award
- *National Grange Legislative Fly-in

Membership/Leadership



Department:

- *Heirloom Program Contests
- *State Cultivator of the Year
- *Grange Birthday Club!



GRANGE LEGACY FAMILY RECOGNITION

Guidelines:

1. Deadline is September 1 to be recognized in that year.
2. Must have at least 5 generations of Grange members, including Junior members.
3. Anyone can nominate a legacy family.
4. Families will be recognized at the annual National Convention in November.

YOUTH FAIRS PROGRAM



To integrate the Youth Fairs Program into the traditional Grange organization, we will be offering a variety of activities at the Annual State Grange Session that will be of interest to our youth and the Grange as a whole. Please refer to the Washington State Grange Youth Fairs Program Guide for a complete list of program rules.

AGES FOR YOUTH FAIRS PROGRAM ACTIVITIES

Ages for all Grange Youth Fairs Program are determined by the age as of January 1 of the current year. Age divisions will be as follows:

- Beginner – Ages 5-7
- Junior – ages 8-10
- Pre-Teen – ages 11-13
- Teen – ages 14-19

2023 PARTICIPATING FAIRS

Benton Franklin Fair – Kennewick
Chelan County Fair – Cashmere
Clallam County Jr Livestock Show
Clark County Fair – Ridgefield
Columbia Basin Jr Livestock Show
Ferry County Fair – Republic
Grant County Fair – Moses Lake
Grays Harbor County Fair – Elma
Kittitas County Fair – Ellensburg
Milton Freewater Junior Show
North Central WA Fair – Waterville
Northeast WA Fair – Colville
Othello Community Fair
Walla Walla Fair & Frontier Days

AGES FOR YOUTH FAIRS PROGRAM ACTIVITIES

Ages for all Grange Youth Fairs Program are determined by the age as of January 1 of the current year. Age divisions will be as follows:

- Beginner – Ages 5-7
- Junior – ages 8-10
- Pre-Teen – ages 11-13
- Teen – ages 14-19

MEMBERSHIP

1. Junior Grangers, ages 5-13, must be either a regular member of a Junior Grange or a 1+ member of a Subordinate Grange in Washington State.
2. Youth Grangers, ages 14-19, must be a Subordinate Grange member in Washington State.
3. All adults working with youth in the Grange Fairs Program, either as coordinators or project leaders, shall be members of a Subordinate Grange in Washington State.
4. All members must have been reported on the Grange New Member Report and/or Secretary Report no later than March 31 of the current year. Upon approval of the State Grange, this may be



adjusted to the June 30 report for fairs participating in the first year.
5. All Grange Junior and Youth Members may participate in these programs, regardless of whether or not their fair has a Grange Youth Fairs division.

ACTIVITIES TO BE HELD AT THE ANNUAL STATE SESSION

Rules and Guidelines for each activity will be posted on the State Grange website, Youth Fairs Department Page, as soon as they are available.

Livestock Judging Contest

Will be held on Saturday, June 29 at 8 a.m. Awards will be presented to the top individuals and the top Grange teams.

Public Speaking Contest

Date and time to be announced. The Best of Show winner qualifies for the National Grange Public Speaking Contest to be held in November in Bettendorf, Iowa.

Educational Poster Contest

Entries will be due on June 25-26 and are to be picked up on June 30. Cash awards to the top three entries will be awarded in each age group. Complete rules will be posted on the Grange website, Youth Fairs Department Page.

PARTICIPATION IN OTHER GRANGE CONTESTS

All Grange members may enter the other contests listed in the program handbook. Please contact youth Pomona Grange officials for dates and locations of Pomona Grange contests.

Youth Fairs groups are encouraged to participate in the Junior Grange Community Service Contest, the Grange Fair Booth Contest, and the Junior Grange Leader of the Year Program. Please refer to the Junior Grange Department section of this program handbook.
